

# NORFOLK BROADS DIRECT



*Setting The Hire Standard*

Luxury hire cruisers and waterside holiday homes at the heart of the beautiful Broads National Park

*Experience life in the slow lane....*



2019  
Holiday Brochure





Fair **MARQUESS**  
SLEEPS 2

**P13**



Fair **JUBILEE**  
SLEEPS 2

**P14**



Fair **PRINCE**  
SLEEPS 2

**P15**



Fair **PRINCESS**  
SLEEPS 2

**P16**



Fair **SENATOR**  
SLEEPS 2

**P17**



Fair **EXECUTIVE**  
SLEEPS 2 - 4

**P18**



Fair **AMBASSADOR**  
SLEEPS 2 - 4

**P19**



Fair **VISCOUNT**  
SLEEPS 2 - 4

**P20**



Fair **REGENT**  
SLEEPS 2 - 4

**P21**



Fair **CHANCELLOR**  
SLEEPS 4

**P22**

Which boat  
will you  
choose?

Find your  
ideal holiday  
cruiser here.

For more information  
or to book call us  
on 01603 782207  
or visit our website  
[www.broads.co.uk](http://www.broads.co.uk)





NEW  
2017  
& 2018



Fair **ENTREPRENEUR**  
SLEEPS 4 - 6

**P24**



Fair **COMMODORE**  
SLEEPS 4 - 6

**P25**



Fair **DUCHESS**  
SLEEPS 4 - 6

**P26**



Fair **ROYALE**  
SLEEPS 4 - 6

**P27**



Fair **MONARCH**  
SLEEPS 4 - 6

**P29**



Fair **PRESIDENT**  
SLEEPS 4 - 6

**P30**



Fair **SOVEREIGN**  
SLEEPS 4 - 6

**P31**



Fair **COUNTESS**  
SLEEPS 4 - 6

**P32**



Fair **DUKE**  
SLEEPS 4 - 6

**P33**



Fair **COMMISSIONER**  
SLEEPS 4 - 6

**P34**



Fair **MAJESTY**  
SLEEPS 6

**P35**



Fair **STATESMAN**  
SLEEPS 6 - 8

**P36**



Fair **ADMIRAL**  
SLEEPS 6 - 8

**P37**



Fair **EMPEROR**  
SLEEPS 8

**P38**



Fair **EMPRESS**  
SLEEPS 7 - 11

**P39**





Photograph courtesy of Karen Howe  
featuring Rodney and Mabel

“ Credit to each and every member of your staff,  
you are the most friendly and helpful team on  
the Broads. ”

Mr and Mrs Emmett, Sheffield  
Fair Chancellor, August 2018



“ We have used  
NBD for the last few  
years and now would not  
even consider using anyone  
else... We really believe NBD  
have set the benchmark  
for boating holidays on the  
Norfolk Broads. ”

Miss Seal, Stevenage  
Fair Princess – July 2018







We went for peace and quiet, relaxation, nice pub food and dog walking. We got the lot.

Mr Lloyd, Chester  
Fair Princess – April 2018



# Contents

PAGE

Welcome to Norfolk Broads Direct	6
About our holiday cruisers	8 - 9
The NBD Broads map	10 - 11
First time on the Broads?	12
Back again..? It's great to see you...	12

## HOLIDAY CRUISERS

Our cruiser selection	13 - 39
-----------------------	---------

## HOLIDAY HOMES

Waterside holiday homes	40 - 46
-------------------------	---------

## BROADS TOURS

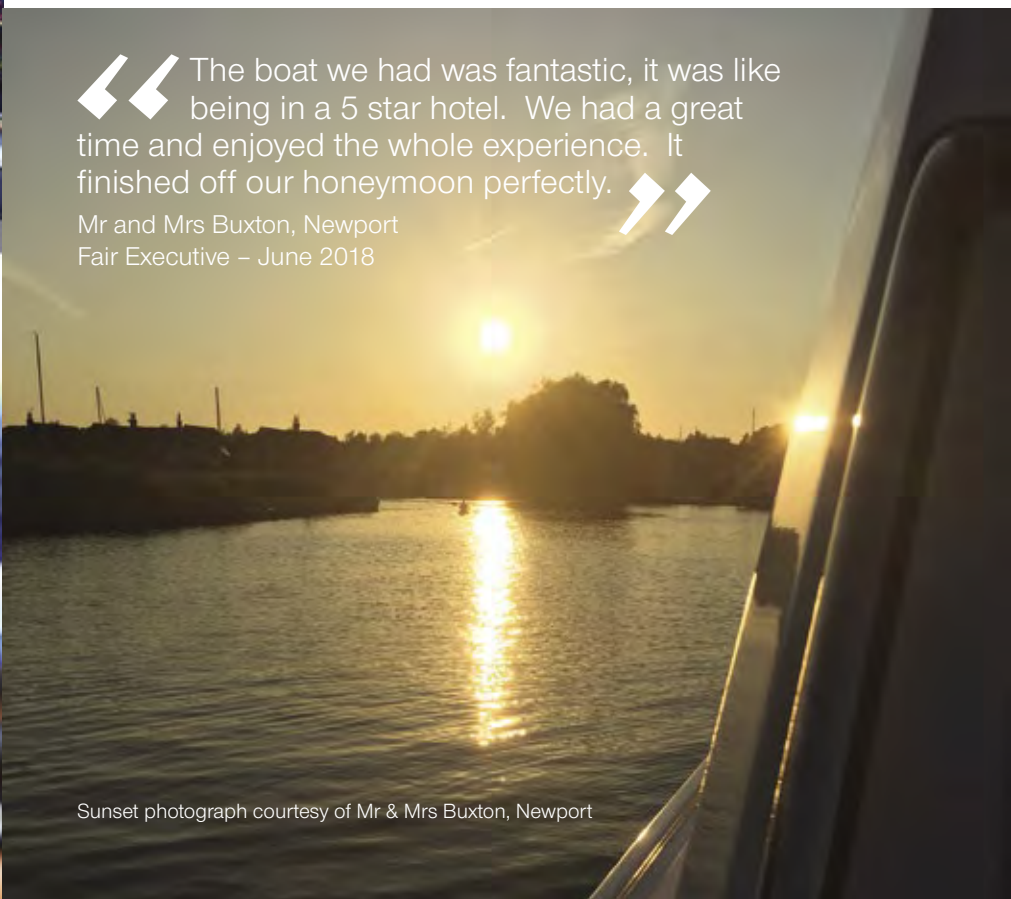
Try a river trip	48
Day boat hire	49
All you need to know about the Norfolk Broads	50
Our commitment to the environment	51
Offers and discounts	52
Booking deposits & information	53
How to get to us & what happens when you arrive	54
Terms & conditions	55



The boat we had was fantastic, it was like being in a 5 star hotel. We had a great time and enjoyed the whole experience. It finished off our honeymoon perfectly.



Mr and Mrs Buxton, Newport  
Fair Executive – June 2018



Sunset photograph courtesy of Mr & Mrs Buxton, Newport





## Dear Norfolk Broads Holidaymaker, Welcome to our 2019 Holiday Brochure

If you are looking for an enchanting mix of relaxation and discovery then look no further than a Norfolk Broads Direct holiday on Britain's Magical Waterland - the Broads National Park. There are 125 miles of glorious waterways, teeming with wildlife, just waiting to be explored and whether you choose to be afloat in one of our luxury cruisers or enjoy our waterside holiday cottages, there is no better way to discover the Broads.

Whether you have come for the bird and otter spotting, to enjoy the fabulous fishing, visit riverside pubs, capture the perfect sunset on camera, or simply sit back and relax as you glide over the water we are passionate about helping you to make the most of your visit.

Our Five-Star fleet of cruisers - Faircraft Loynes - not only has a heritage dating back to 1878, but are amongst the most modern and well-equipped boats on the Broads. In short, we're here to provide you with the perfect floating home from home!

If you'd like the scenery without the sailing, then why not look at our range of delightful holiday homes? Many properties are right by the water and we've taken care to lovingly furnish each one to provide the ideal base for you to explore the whole of Norfolk, including its magnificent beaches.

Holidays should be an experience to remember and we are here to offer friendly advice to make sure you get the most out of your stay. Whether you are considering a boating holiday for the first time or need a little advice choosing the perfect cottage simply give us a call on **01603 782207**. Alternatively email **info@broads.co.uk** or visit **www.broads.co.uk**

We look forward to welcoming you to the Broads very soon!

With kindest regards

**The Team at Norfolk Broads Direct**



### Fair Marquess

This year we are proud to have launched two all new cruisers - Fair Marquess 1 & 2.

These two cruisers were built here in Wroxham by our team of experienced boat builders and marine engineers.

They provide excellent accommodation for two people with dual steering positions, a fantastic sundeck, spacious living area and a luxurious cabin and bathroom.

For more details see page 13.



A photograph of three people on a boat, all wearing red and blue life jackets. On the left, a woman with long brown hair is smiling and holding a fishing rod. In the center, a man wearing a straw hat and a life jacket is also smiling and holding a glass of red wine. On the right, a woman with long dark hair is smiling and holding a fishing rod. The background is a bright, slightly blurred outdoor setting.

Learn new skills  
on an NBD holiday!

“ Excellent holiday.  
Boat very well equipped  
and easy to manoeuvre. Very  
clean and welcome pack was  
a really nice personal touch.  
Boatyard seems small and  
friendly. Would definitely use  
again. Thank you. ”

Mrs Milburn, Newcastle upon Tyne  
July 2018 Fair Royale

## GOOD NEWS FOR EARLY BIRDS!

We have extended our early booking offer: book your 2019 holiday before 30 November 2018 to receive 5% off the hire terms. Don't forget you can use your returning customer loyalty discount in conjunction with any of our special offers. Please see page 52 for details.

Families please note we are delighted to offer the Easter and October Half-Term school holidays for the very lowest price band!



# About our holiday cruisers

## What's on board?

All our holiday cruisers are fully equipped to ensure you have a safe, comfortable and carefree holiday, with each boat featuring:

- Mains power (via inverter with wattage restrictions)  
Please note that certain appliances, particularly hair straighteners and irons, are not suitable for use on board
- Fully equipped galley, includes cutlery, crockery and utensils, gas cooker / hob, microwave and fridge
- Hot and cold water, with temperature controlled showers
- Bed linen includes duvets, sheets, pillows and blankets
- Towels (two per crew member)
- Warm air heating
- Flat screen television, DVD player, radio/CD player
- Shaver point, hair dryer (low wattage 240v)
- Complimentary welcome pack including tea, coffee, and even a bottle of bubbly!

In addition to the standard equipment, there are many other options and facilities on board. Please see the individual cruiser pages for further details.

On each cruiser page you will find an interior layout plan. Please be aware that these are an artist's impression only – colour schemes and layout may vary; they are not to scale.

## Choose your holiday duration

Whether you would prefer to take a long weekend, extended mid-week break, a full week holiday or maybe even longer, we can be as flexible as you wish.

- Three night short breaks start on a Friday or Saturday
- Four night short breaks start on a Monday or Tuesday
- Weekly holidays start on a Monday, Tuesday, Friday or Saturday.

Longer holidays can start on any of these days. Please see individual cruiser pages for unique start days.

## SAFETY

Safety is absolutely paramount on and around the water. Norfolk Broads Direct provides buoyancy aids for all of your party, and we even have buoyancy aids available for dogs (refundable deposit required for dog buoyancy aids).



## Helping you make the right choice...



### Price

The cost of the cruiser is dependent on both the start date and the duration of your holiday. You will see on each individual cruiser page that the prices are shown for both a full week and a short break. For 10/11 day holidays, take the first week's hire price and add 50% of the following week's hire charge.

For two week holidays, save 10% or 15% off the lowest priced week. Save 15% off the lowest priced week for a two week holiday starting before 20th June or after 29 August 2019. Save 10% off the lowest priced week for a two week holiday starting between - 20th June or 29 August 2019.



### Fuel

Your cruiser will be ready for you with a full tank of diesel; the fuel deposit is an average of what we think your chosen cruiser will use. On your return we will re-fill the tank and if you have used less than your deposit we will refund you, or if you have used over you may owe us a little extra.



### Damage waiver

Although all the cruisers are insured, we require you to pay a non-refundable waiver of £45 per cruiser for cruisers up to 6 berth and £55 for cruisers 7 berth and over. This will cover you for any accidental damage caused to the boat, its equipment or to any third party. Alternatively, you have the option of paying a refundable security deposit; some party types will be required to pay this. For further details please see page 53.



### FREE Car Parking

We provide one outside parking space free of charge to customers hiring a cruiser up to 4-6 berth, and two outside parking spaces free of charge for customers hiring a 6-berth-plus cruiser. Additional outside and/or undercover parking available on request, a fee will apply. For further details please see page 53.



### Complimentary welcome pack

On your arrival we will be delighted to present you with a special welcome gift. Inside a lovely reusable jute bag you will find tea, coffee, quality snacks and even a bottle of bubbly.



### Your Comfort

We care about your comfort. If you or anybody in your party has limited mobility or other special needs please telephone our booking office on 01603 782207. We will be delighted to help you select the boat or holiday home that best suits your needs



## Ratings

For your reassurance we have had Norfolk Broads Direct independently



assessed by British Marine (BM) and Visit England (VE). Our boatyard and hireboat operation holds a Quality Accredited Boatyard (QAB) accreditation.

Our cruisers have been individually assessed to demonstrate the quality, standard and facilities provided. The grades are displayed on each cruiser's description. All NBD cruisers are either four or five star rated, reflecting the overall quality of our prestigious fleet. We also offer Premier Cruisers, equipped to the very highest specification, which take five star rated cruisers to a new level.

## Trust Pilot

To give you even more confidence in the quality of our fleet and service we have registered with the independent review site TrustPilot. Read what our customers have said about us here <https://uk.trustpilot.com/review/www.broads.co.uk>

## Size matters

Choose your cruiser to accommodate your whole party comfortably. You will notice that on each individual cruiser page it clearly states the maximum number of available beds. For example, Fair Executive sleeps 2-4, meaning that 2 people sleep in the forward cabin and 2 people can sleep in the saloon, your living area by day and sleeping area by night.

**SLEEPS  
2-11**

## Bridges

There are low bridges at Wroxham, Potter Heigham, Wayford and Beccles which some classes of cruiser will not pass under at any time; these are clearly indicated within each cruiser's page. You will also find the cruiser's height when prepared for passage under bridges. When navigating Wroxham and Potter Heigham bridges we insist that our customers use the appropriate Bridge Pilot. Please note that water and tidal conditions can make these bridges impassable to all cruisers at certain times.



## Shore power

All of the cruisers in our fleet can be hooked up to shore power points that can be found at various moorings and boatyards around the Broads. Hooking up to shore power will provide charging capacity to the on-board batteries giving greater flexibility for the use of the 240v power supply. However, the use of shore power is not essential as your normal cruising should ensure sufficient power in your batteries for the evening.



## Bow thrusters

Selected cruisers are fitted with bow thrusters. These will bring the boat around without moving forward or backwards, making manoeuvring and mooring easier. Not essential but a very useful addition to assist you to moor your boat.



## Pets

There is no need to leave your best friend at home. Pets are welcome on board all our holiday cruisers and there are plenty of areas to let them off to stretch their legs. An extra charge applies to pets; see Page 53. Maximum of two dogs per cruiser. A refundable £20 deposit is required for the loan of a dog buoyancy aid. Please bring suitable bedding for your dog. We respectfully request that dogs are kept off the upholstered furnishings.



## Fishing

The coarse fishing season runs from 16 June to 14 March. You will need a current Environment Agency rod licence available from Post Offices or online at

[www.environment-agency.gov.uk](http://www.environment-agency.gov.uk).

For more information please visit [www.broads.co.uk/norfolk-broads/fishing-on-the-broads](http://www.broads.co.uk/norfolk-broads/fishing-on-the-broads)



## How to book ...

To help you choose the right cruiser for your party we have tried to include as much information as possible. However should you require any further assistance, please do not hesitate to contact us on **01603 782207**.

### STEP 1

Select the right cruiser to suit your party's requirements. To help with your choice you can take a virtual tour around our cruisers; visit our website [www.broads.co.uk](http://www.broads.co.uk)

### STEP 2

Check that the cruiser you would like is available for your desired holiday start date. It is often easier at this stage to have a couple of choices to avoid any disappointment.

You can either check availability via our website [www.broads.co.uk](http://www.broads.co.uk) or if you would prefer to speak to us, call on **01603 782207**.

### STEP 3

At this point, if you are making your booking via our website, we will ask for your name, address and details of your party. Any optional extras can be reserved via email or by calling us. Booking online takes just a few minutes and all payments are made through a secure payment gateway.

To discuss your requirements, or to talk through the different types of cruisers or waterside holiday homes we have on offer, please telephone our booking office on **01603 782207**. We will be delighted to answer your questions and take your booking to steer you towards the perfect holiday for you and your party.

We require a minimum of two adults on each cruiser.

*We look forward to welcoming you very soon!*





FAR FROM THE  
MADDENING CROWD



HISTORY, CULTURE AND  
AMAZING NATURAL SIGHTS  
THROUGHOUT YOUR JOURNEY

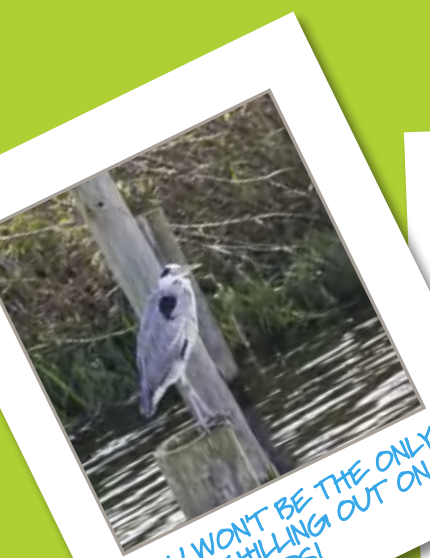


YOU'LL BE SHARING THE  
BROADS WITH SOME  
CLASSIC WHERRY'S



PLENTY OF  
FOR A BITE

... the Broads,  
so much more  
to do and  
see!



YOU WON'T BE THE ONLY  
ONES CHILLING OUT ON  
THE BROADS!



NORWICH - A FINE CITY



AMAZING SUNSETS



For even more useful information about where to go and what to do on the Broads check out our interactive map on [www.broads.co.uk/map-of-the-norfolk-broads](http://www.broads.co.uk/map-of-the-norfolk-broads)

■ Navigable Waters  
■ Unnavigable Waters





PLACES TO STOP TO EAT



SEASIDE ATTRACTIONS ARE WITHIN REACH ON LONGER HOLIDAYS



Thank you Team NBD – nothing was too much trouble to make our holiday. We had 4 generations on our boat and everyone thoroughly enjoyed it.



The Jenkins family, Cambridge  
Fair Empress – August 2018



WHERE SHALL WE GO TODAY?



Wonderful. Fully chilled and batteries recharged. The holiday did exactly as we expected it to do. Boat fantastic. Locals lovely. Staff wonderful.



Jayne, Ursh and Fred, Stourbridge  
Fair Duchess – May 2018



Must remember to look at the Norfolk Broads website  
[www.broads.co.uk](http://www.broads.co.uk)

©Broads Authority



# First time on the Broads?

**Will this be your first time holidaying on the Broads?  
Don't worry – you don't need previous boating  
experience to captain one of our luxury hire cruisers.**

When you first board your cruiser one of our friendly, experienced team will thoroughly explain the controls and safety equipment before heading out on the river to teach you how to manoeuvre and to moor up your cruiser.

During your holiday you can be reassured that we are only ever a phone call away. Most of the time, we can solve any questions that you may have over the telephone, but we're always happy to come out to you wherever you are on the Broads.

A folder containing practical information on captaining your cruiser is included on arrival along with a map and welcome pack containing our exclusive souvenir guidebook to the Broads and many other goodies!

If you would like some help with your choice of cruiser, please visit our website where you can take a virtual tour of each cruiser.

**Still got questions? We're here to help you choose your perfect Broads break, so please give us a call on 01603 782207.**

Exclusive  
souvenir  
guidebook  
to make  
the most of  
your holiday



To help you to make the most of your holiday, Norfolk Broads Direct is proud to include a unique A to Z souvenir guidebook to the Broads National Park in your welcome pack.

The glossy souvenir guidebook, which has been written by our staff to share our knowledge, favourite places and passion for the Broads with you, is exclusively available to our customers.

The guide to 39 Broadland towns and villages is packed full of inspiring information and photos, features bite sized chunks on mooring and eating out plus a useful key detailing mooring types and dog friendly eateries.

Back again..?  
Benefit from our  
customer loyalty  
scheme.

**We love welcoming our regular customers back year-after-year and offer a Returning Customer Loyalty Scheme as our way of saying "Thank you"!**

It's simple: each time you holiday with us you will be given a unique voucher code, which entitles you to a 5% discount off the hire terms of your next holiday. This may be a holiday in 2020, 2021 or even a second or third holiday in 2019, (only one voucher code can be redeemed per holiday and terms and conditions apply.)

Better still, for early birds, your Returning Customer Loyalty discount can be used in conjunction with the early booking discount of 5% if you book your 2019 holiday before 30 November 2018 or your 2020 holiday before 31 October 2019.



# Fair MARQUESS

STARTS FRIDAY, SATURDAY, MONDAY & TUESDAY



PREMIER CRUISER

SLEEPS

2

NEW  
2019



A luxury craft for two people fitted out to the very highest specification. Space is abundant in this beautiful cruiser, with dual steering positions and outside sun-lounger and dining area.



CRUISER DIMENSIONS

L: 36ft (10.97m)

B: 12ft (3.66m)



Image above is of a similar craft.

Layout may change during construction

## Features

- Dual steering with excellent outside steering position
- Alfresco dining and lounging area
- Bow thruster for ease of mooring
- Luxury bathroom with full height shower unit
- Laminate flooring throughout
- TV and DVD player with freeview channels in saloon
- TV with freeview channels in cabin
- Electric anchor winch

## Sleeping

2 doubles made up of:

- 1 large cabin with walk around double bed
- 1 convertible double in saloon

*Please note: will not pass under Wroxham, Potter Heigham, Wayford or Beccles Old bridges. Will pass under other bridges at suitable tides. Cruiser height when prepared for passage under bridges 8ft 4in (2.55m)*

Wi-Fi: 3GB data free of charge - additional data available at own cost

Dates	Week	S/Break
Jan 04 - May 08	1015	705
May 09 - May 22	1280	890
May 23 - May 29	1655	1165
May 30 - Jun 05	1470	1030
Jun 06 - Jun 19	1565	1095
Jun 20 - Jul 17	1655	1165
Jul 18 - Aug 21	1835	1280
Aug 22 - Aug 28	1655	1165
Aug 29 - Sep 18	1380	965
Sep 19 - Dec 18	1015	705
Dec 19 - Jan 01	1280	890
Fuel Deposit	£130	£65
Damage Waiver	£45	£45

For friendly customer service or to book call **01603 782207**

P13



# Fair JUBILEE

STARTS FRIDAY, SATURDAY, MONDAY & TUESDAY



PREMIER CRUISER

SLEEPS  
**2**



Luxurious and spacious sedan style cruiser, perfect for a couple



CRUISER DIMENSIONS

L: 36ft (10.97m)

B: 12ft (3.66m)



For a virtual 360° tour of this boat visit

[www.broads.co.uk/boats/fair-jubilee](http://www.broads.co.uk/boats/fair-jubilee)

## Features

- Raised central steering position
- Sunroof over saloon
- Easy stern access
- Bow thruster for ease of mooring
- Satellite dome to receive Freesat TV channels
- Additional TV in forward cabin
- Rear patio doors to large outside seating area
- Walk around double berth
- Whirlpool bath and domestic flush toilet
- Separate full height shower/wet room
- Solar panel technology

## Sleeping

- 1 double in forward cabin

*Please note: will not pass under Wroxham, Potter Heigham, Wayford or Beccles Old bridges. Will pass under other bridges at suitable tides. Cruiser height when prepared for passage under bridges 8ft 10in (2.69m)*

Wi-Fi: 3GB data free of charge - additional data available at own cost

Dates	Week	S/Break
Jan 04 - May 08	905	640
May 09 - May 22	1175	815
May 23 - May 29	1505	1055
May 30 - Jun 05	1340	935
Jun 06 - Jun 19	1425	1010
Jun 20 - Jul 17	1505	1055
Jul 18 - Aug 21	1660	1160
Aug 22 - Aug 28	1505	1055
Aug 29 - Sep 18	1245	870
Sep 19 - Dec 18	905	640
Dec 19 - Jan 01	1175	815
Fuel Deposit	£130	£65
Damage Waiver	£45	£45



# Fair PRINCE

STARTS FRIDAY, SATURDAY, MONDAY & TUESDAY



PREMIER CRUISER

SLEEPS  
**2**



Superb cruiser with spacious living accommodation for a couple



CRUISER DIMENSIONS

L: 35ft (10.67m)

B: 12ft (3.66m)



For a virtual 360° tour of this boat visit

[www.broads.co.uk/boats/fair-prince](http://www.broads.co.uk/boats/fair-prince)

## Features

- Raised central steering position
- Electrically operated sliding canopy over saloon
- Easy stern access
- Bow thruster for ease of mooring
- Separate dining area
- Additional TV in aft cabin
- Enclosed full height shower unit with electric flush toilet

## Sleeping

- 1 double in rear cabin

*Please note: will not pass under Potter Heigham bridge. Will pass under other bridges at suitable tides. Cruiser height when prepared for passage under bridges 7ft (2.13m)*

Wi-Fi: 3GB data free of charge - additional data available at own cost

Dates	Week	S/Break
Jan 04 - May 08	910	635
May 09 - May 22	1170	810
May 23 - May 29	1500	1035
May 30 - Jun 05	1320	930
Jun 06 - Jun 19	1415	1005
Jun 20 - Jul 17	1500	1035
Jul 18 - Aug 21	1640	1150
Aug 22 - Aug 28	1500	1035
Aug 29 - Sep 18	1230	860
Sep 19 - Dec 18	910	635
Dec 19 - Jan 01	1170	810
Fuel Deposit	£130	£65
Damage Waiver	£45	£45

For friendly customer service or to book call **01603 782207**

**P15**



# Fair PRINCESS

STARTS FRIDAY & MONDAY

SLEEPS

2



Eco-friendly and easy to operate,  
perfect for a couple



CRUISER DIMENSIONS

L: 31ft (9.44m)

B: 12ft (3.66m)



For a virtual 360° tour of this boat visit  
[www.broads.co.uk/boats/fair-princess](http://www.broads.co.uk/boats/fair-princess)

## Features

- Forward steering position
- Split sliding canopy
- Single level throughout
- Easy stern access
- Walk around double berth
- Eco-friendly hybrid diesel/electric boat
- Shower and electric flush toilet

## Sleeping

- 1 double in rear cabin

*Passes under all bridges at suitable tides.  
Cruiser height when prepared for passage  
under bridges 6ft 8in (2.03m)*

Dates	Week	S/Break
Jan 04 - May 08	720	505
May 09 - May 22	915	635
May 23 - May 29	1175	815
May 30 - Jun 05	1050	735
Jun 06 - Jun 19	1110	775
Jun 20 - Jul 17	1175	815
Jul 18 - Aug 21	1305	915
Aug 22 - Aug 28	1175	815
Aug 29 - Sep 18	980	685
Sep 19 - Dec 18	720	505
Dec 19 - Jan 01	915	635
Fuel Deposit	£100	£50
Damage Waiver	£45	£45



# Fair SENATOR

STARTS FRIDAY, SATURDAY, MONDAY & TUESDAY

SLEEPS

2



CRUISER DIMENSIONS

L: 33ft (10.6m)

B: 12ft (3.66m)

Sporty and chic cruiser,  
ideal for a couple



For a virtual 360° tour of this boat visit  
[www.broads.co.uk/boats/fair-senator](http://www.broads.co.uk/boats/fair-senator)

## Features

- External steering position
- Easy folding rear canvas canopy
- Spacious outside seating and dining area
- Easy stern access
- Shower and electric flush toilet

## Sleeping

- 1 double in forward cabin

*Please note: will not pass under Potter Heigham bridge. Will pass under other bridges at suitable tides. Cruiser height when prepared for passage under bridges 7ft 2in (2.18m)*

Dates	Week	S/Break
Jan 04 - May 08	775	555
May 09 - May 22	1010	705
May 23 - May 29	1285	890
May 30 - Jun 05	1135	800
Jun 06 - Jun 19	1210	850
Jun 20 - Jul 17	1285	890
Jul 18 - Aug 21	1425	1010
Aug 22 - Aug 28	1285	890
Aug 29 - Sep 18	1070	760
Sep 19 - Dec 18	775	555
Dec 19 - Jan 01	1010	705
Fuel Deposit	£100	£50
Damage Waiver	£45	£45

For friendly customer service or to book call **01603 782207**

P17





# Fair EXECUTIVE

STARTS FRIDAY, SATURDAY, MONDAY & TUESDAY



PREMIER CRUISER

SLEEPS  
**2-4**



CRUISER DIMENSIONS

L: 36ft (10.97m)

B: 12ft (3.66m)

A luxurious and spacious  
sedan style cruiser



For a virtual 360° tour of this boat visit

[www.broads.co.uk/boats/fair-executive](http://www.broads.co.uk/boats/fair-executive)

## Features

- Raised central steering position
- Sun-roof over saloon
- Easy stern access
- Bow thruster for ease of mooring
- Satellite dome to receive Free-sat TV channels
- Additional TV in forward cabin
- Rear patio doors to large outside seating area
- Walk around double berth
- Whirlpool bath & domestic flush toilet
- Seperate full height shower/ wet room

## Sleeping

2 doubles made up from:

- 1 double in forward cabin
- 1 sofa bed in saloon

*Please note: will not pass under Wroxham, Potter Heigham, Wayford or Beccles Old bridges. Will pass under other bridges at suitable tides. Cruiser height when prepared for passage under bridges 8ft 10in (2.69m)*

Wi-Fi: 3GB data free of charge - additional data available at own cost

Dates	Week	S/Break
Jan 04 - May 08	925	650
May 09 - May 22	1200	830
May 23 - May 29	1540	1075
May 30 - Jun 05	1365	950
Jun 06 - Jun 19	1455	1030
Jun 20 - Jul 17	1540	1075
Jul 18 - Aug 21	1690	1185
Aug 22 - Aug 28	1540	1075
Aug 29 - Sep 18	1270	885
Sep 19 - Dec 18	925	650
Dec 19 - Jan 01	1200	830
Fuel Deposit	£130	£65
Damage Waiver	£45	£45



# Fair AMBASSADOR

STARTS FRIDAY, SATURDAY, MONDAY & TUESDAY

SLEEPS  
**2 - 4**

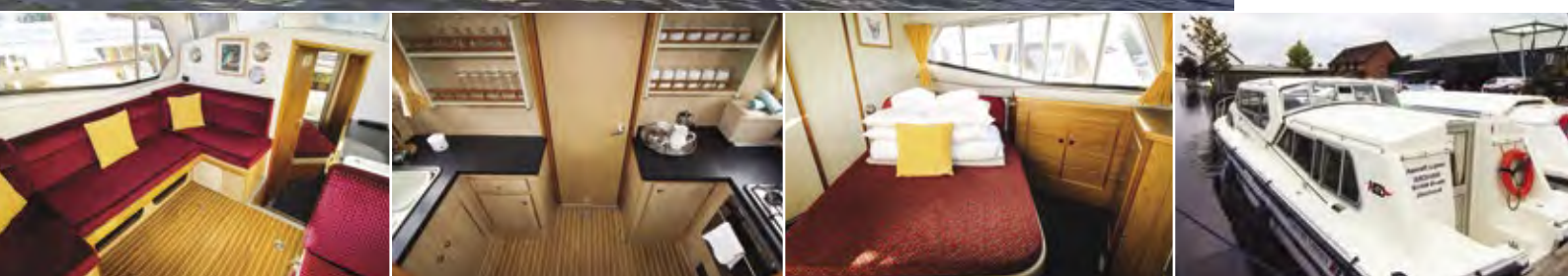


CRUISER DIMENSIONS

L: 31ft (9.45m)

B: 11ft (3.35m)

Comfortable and practical  
cruiser, ideal for a couple



For a virtual 360° tour of this boat visit  
[www.broads.co.uk/boats/fair-ambassador](http://www.broads.co.uk/boats/fair-ambassador)

## Features

- Raised central steering position
- Sliding canopy over saloon seating area
- Walk around rear double berth
- Spacious shower with electric flush toilet

## Sleeping

2 doubles made up of:

- 1 double in rear cabin
- 1 convertible double in saloon

*Passes under all bridges at suitable tides.  
Cruiser height when prepared for passage  
under bridges 6ft 9in (2.11m)*

Dates	Week	S/Break
Jan 04 - May 08	630	435
May 09 - May 22	790	560
May 23 - May 29	1025	710
May 30 - Jun 05	910	635
Jun 06 - Jun 19	975	675
Jun 20 - Jul 17	1025	710
Jul 18 - Aug 21	1130	790
Aug 22 - Aug 28	1025	710
Aug 29 - Sep 18	845	590
Sep 19 - Dec 18	630	435
Dec 19 - Jan 01	790	560
Fuel Deposit	£100	£50
Damage Waiver	£45	£45

For friendly customer service or to book call **01603 782207**

**P19**



# Fair VISCOUNT

STARTS FRIDAY, SATURDAY, MONDAY & TUESDAY

SLEEPS  
**2 - 4**



CRUISER DIMENSIONS

L: 31ft (9.45m)

B: 12ft (3.66m)

Modern cruiser, perfect  
for a couple or young family



For a virtual 360° tour of this boat visit  
[www.broads.co.uk/boats/fair-viscount](http://www.broads.co.uk/boats/fair-viscount)

## Features

- Forward steering position
- Split sliding canopy
- Single level throughout
- Easy stern access
- Shower and electric flush toilet

## Sleeping

2 doubles and 1 single made up of:

- 1 double in rear cabin
- 1 single and 1 convertible double in saloon

*Passes under all bridges at suitable tides.  
Cruiser height when prepared for passage  
under bridges 6ft 8in (2.03m)*

Dates	Week	S/Break
Jan 04 - May 08	<b>630</b>	<b>435</b>
May 09 - May 22	<b>790</b>	<b>560</b>
May 23 - May 29	<b>1025</b>	<b>710</b>
May 30 - Jun 05	<b>910</b>	<b>635</b>
Jun 06 - Jun 19	<b>975</b>	<b>675</b>
Jun 20 - Jul 17	<b>1025</b>	<b>710</b>
Jul 18 - Aug 21	<b>1130</b>	<b>790</b>
Aug 22 - Aug 28	<b>1025</b>	<b>710</b>
Aug 29 - Sep 18	<b>845</b>	<b>590</b>
Sep 19 - Dec 18	<b>630</b>	<b>435</b>
Dec 19 - Jan 01	<b>790</b>	<b>560</b>
Fuel Deposit	£100	£50
Damage Waiver	£45	£45



# Fair REGENT

STARTS FRIDAY, SATURDAY, MONDAY & TUESDAY

SLEEPS  
**2 - 4**

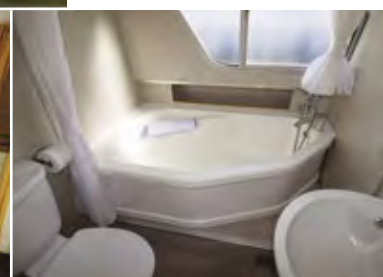


CRUISER DIMENSIONS

L: 35ft (10.66m)

B: 12ft (3.66m)

Modern cruiser, ideal  
for a couple or young family



For a virtual 360° tour of this boat visit  
[www.broads.co.uk/boats/fair-regent](http://www.broads.co.uk/boats/fair-regent)

## Features

- Forward steering position
- Split sliding canopy
- Single level throughout
- Walk around rear double berth
- Large bathroom with a full size corner bath with shower overhead and domestic flush toilet

## Sleeping

1 double, 2 singles made up of:

- 1 double, 1 single in rear cabin
- 1 single in saloon

*Passes under all bridges at suitable tides.  
Cruiser height when prepared for passage  
under bridges 6ft 10in (2.08m)*

Dates	Week	S/Break
Jan 04 - May 08	700	485
May 09 - May 22	895	620
May 23 - May 29	1165	810
May 30 - Jun 05	1035	720
Jun 06 - Jun 19	1095	770
Jun 20 - Jul 17	1165	815
Jul 18 - Aug 21	1280	895
Aug 22 - Aug 28	1165	815
Aug 29 - Sep 18	965	670
Sep 19 - Dec 18	700	485
Dec 19 - Jan 01	895	620
Fuel Deposit	£100	£50
Damage Waiver	£45	£45

For friendly customer service or to book call **01603 782207**

**P21**



# Fair CHANCELLOR

STARTS FRIDAY, SATURDAY, MONDAY & TUESDAY



PREMIER CRUISER

SLEEPS  
**4**



Very spacious, four berth cruiser,  
perfect for two couples



CRUISER DIMENSIONS

L: 44ft (13.41m)

B: 12ft (3.66m)



For a virtual 360° tour of this boat visit  
[www.broads.co.uk/boats/fair-chancellor](http://www.broads.co.uk/boats/fair-chancellor)

## Features

- Raised central steering position
- Electrically operated sliding canopy over saloon
- Easy stern access
- Bow thruster for easy mooring
- Satellite dome to receive free-sat TV channels
- Playstation 4 (games not included)
- 2 en-suite shower rooms with enclosed shower, 1 full height and electric flush toilets
- Electric anchor winch

## Sleeping

2 doubles or 1 double and 2 singles made up of:

- 1 double in rear cabin
- 1 double or 2 singles in forward cabin

*Please note: will not pass under Potter Heigham bridge. Will pass under other bridges at suitable tides. Cruiser height when prepared for passage under bridges 7ft (2.13m)*

Wi-Fi: 3GB data free of charge - additional data available at own cost

Dates	Week	S/Break
Jan 04 - May 08	1255	880
May 09 - May 22	1615	1115
May 23 - May 29	2070	1455
May 30 - Jun 05	1835	1280
Jun 06 - Jun 19	1960	1370
Jun 20 - Jul 17	2070	1455
Jul 18 - Aug 21	2295	1615
Aug 22 - Aug 28	2070	1455
Aug 29 - Sep 18	1720	1210
Sep 19 - Dec 18	1255	880
Dec 19 - Jan 01	1615	1115
Fuel Deposit	£150	£75
Damage Waiver	£45	£45



“ I can honestly say that Norfolk  
Broads Direct's whole booking  
procedure, boatyard procedures and  
standard of boat are the best that I  
have come across. We have already  
booked for next year. ”

Mr and Mrs Toms, Doncaster  
Fair Sovereign July 2018





# Fair ENTREPRENEUR

STARTS FRIDAY, SATURDAY, MONDAY & TUESDAY



PREMIER CRUISER

SLEEPS  
**4 - 6**

**NEW  
2017 &  
2018**

*Luxurious cruiser perfect  
for the whole family*



CRUISER DIMENSIONS

L: 46ft (14.02m)

B: 12ft (3.66m)



For a virtual 360° tour of this boat visit

[www.broads.co.uk/boats/fair-entrepreneur](http://www.broads.co.uk/boats/fair-entrepreneur)

## Features

- Dual steering with excellent outside seating, dining area
- Sunroof over the saloon
- Bow thruster for ease of mooring
- Playstation 4 (games not included)
- Spacious saloon and galley
- 2 en-suite shower rooms with enclosed, full height showers and electric flush toilets
- Additional TV in rear cabin
- Electric anchor winch

## Sleeping

3 doubles, or 2 doubles and 2 singles made up of:

- 1 double in rear cabin
- 1 convertible double in saloon
- 1 double or 2 singles in forward cabin

*Please note: will not pass under Wroxham, Potter Heigham, Wayford or Beccles Old bridges. Will pass under other bridges at suitable tides. Cruiser height when prepared for passage under bridges 8ft 2in (2.49m)*

Wi-Fi: 3GB data free of charge - additional data available at own cost

Dates	Week	S/Break
Jan 04 - May 08	1395	975
May 09 - May 22	1780	1245
May 23 - May 29	2285	1605
May 30 - Jun 05	2030	1420
Jun 06 - Jun 19	2160	1510
Jun 20 - Jul 17	2285	1605
Jul 18 - Aug 21	2530	1775
Aug 22 - Aug 28	2285	1605
Aug 29 - Sep 18	1895	1325
Sep 19 - Dec 18	1395	975
Dec 19 - Jan 01	1780	1245
Fuel Deposit	£150	£75
Damage Waiver	£45	£45



# Fair COMMODORE

STARTS FRIDAY, SATURDAY, MONDAY & TUESDAY

SLEEPS  
**4 - 6**



CRUISER DIMENSIONS

L: 35ft (10.67m)

B: 12ft (3.66m)

Stylish cruiser for up to  
six people



For a virtual 360° tour of this boat visit

[www.broads.co.uk/boats/fair-commodore](http://www.broads.co.uk/boats/fair-commodore)

## Features

- Dual steering with excellent outside steering position
- Easy stern access
- Bow thruster
- Upper deck with cushioned seating
- Additional TV in rear cabin
- PlayStation 3 (games not included)
- 2 shower rooms, 1 en-suite with full height enclosed shower and electric flush toilets

## Sleeping

3 doubles or 2 doubles and 2 singles made up of:

- 1 double in rear cabin
- 1 convertible double in saloon
- 1 double or 2 singles in forward cabin

*Please note: will not pass under Wroxham, Potter Heigham, Wayford or Beccles Old bridges. Will pass under other bridges at suitable tides. Cruiser height when prepared for passage under bridges 7ft 11in (2.41m)*



Dates	Week	S/Break
Jan 04 - May 08	935	650
May 09 - May 22	1190	835
May 23 - May 29	1525	1070
May 30 - Jun 05	1365	955
Jun 06 - Jun 19	1445	1010
Jun 20 - Jul 17	1525	1070
Jul 18 - Aug 21	1695	1190
Aug 22 - Aug 28	1525	1070
Aug 29 - Sep 18	1270	890
Sep 19 - Dec 18	935	650
Dec 19 - Jan 01	1190	835
Fuel Deposit	£130	£65
Damage Waiver	£45	£45

For friendly customer service or to book call **01603 782207**

**P25**



# Fair DUCHESS

STARTS FRIDAY, SATURDAY, MONDAY & TUESDAY

SLEEPS  
**4 - 6**



CRUISER DIMENSIONS

L: 35ft (10.67m)

B: 12ft (3.66m)

A family boat all on one level with easy rear access



For a virtual 360° tour of this boat visit  
[www.broads.co.uk/boats/fair-duchess](http://www.broads.co.uk/boats/fair-duchess)

## Features

- Forward steering position
- Split sliding canopy
- Single level throughout
- Easy stern access
- 2 shower rooms, 1 en-suite with electric flush toilets

## Sleeping

3 doubles or 2 doubles and 2 singles made up of:

- 1 double or 2 singles in rear cabin
- 1 double in centre cabin
- 1 convertible double in saloon

*Passes under all bridges at suitable tides.  
Cruiser height when prepared for passage under bridges 6ft 10in (2.08m)*

Dates	Week	S/Break
Jan 04 - May 08	780	555
May 09 - May 22	1000	695
May 23 - May 29	1270	890
May 30 - Jun 05	1135	800
Jun 06 - Jun 19	1220	850
Jun 20 - Jul 17	1270	890
Jul 18 - Aug 21	1425	1000
Aug 22 - Aug 28	1270	890
Aug 29 - Sep 18	1070	750
Sep 19 - Dec 18	780	555
Dec 19 - Jan 01	1000	695
Fuel Deposit	£100	£50
Damage Waiver	£45	£45



# Fair ROYALE

STARTS FRIDAY, SATURDAY, MONDAY & TUESDAY

SLEEPS  
**4 - 6**

An elegant cruiser for up to six people



CRUISER DIMENSIONS

L: 35ft (10.67m)

B: 12ft (3.66m)



For a virtual 360° tour of this boat visit

[www.broads.co.uk/boats/fair-royale](http://www.broads.co.uk/boats/fair-royale)

## Features

- Dual steering with excellent outside steering position
- Easy stern access
- Bow thruster for ease of mooring
- Upper deck with cushioned seating
- Additional TV in rear cabin
- PlayStation 3 (games not included)
- 2 shower rooms, 1 en-suite with full height enclosed shower with electric flush toilets

## Sleeping

3 doubles or 2 doubles and 2 singles made up of:

- 1 double in rear cabin
- 1 convertible double in saloon
- 1 double or 2 singles in forward cabin

*Please note: will not pass under Wroxham, Potter Heigham or Beccles Old bridges. Will pass under other bridges at suitable tides. Cruiser height when prepared for passage under bridges 7ft 11in (2.41m)*

Dates	Week	S/Break
Jan 04 - May 08	1015	705
May 09 - May 22	1280	890
May 23 - May 29	1655	1165
May 30 - Jun 05	1470	1030
Jun 06 - Jun 19	1565	1095
Jun 20 - Jul 17	1655	1165
Jul 18 - Aug 21	1835	1280
Aug 22 - Aug 28	1655	1165
Aug 29 - Sep 18	1380	965
Sep 19 - Dec 18	1015	705
Dec 19 - Jan 01	1280	890
Fuel Deposit	£130	£65
Damage Waiver	£45	£45

For friendly customer service or to book call **01603 782207**

**P27**



“ Booking with Norfolk Broads Direct gives us confidence that we will have the best holiday possible. A whole week of fresh air and different places to visit makes for the perfect holiday! ”

The Taylor family, Essex  
Fair Entrepreneur – July 2018





# Fair MONARCH

STARTS FRIDAY, SATURDAY, MONDAY & TUESDAY



PREMIER CRUISER

SLEEPS  
**4 - 6**



CRUISER DIMENSIONS

L: 40ft (12.19m)

B: 12ft (3.66m)

A spacious elegant cruiser with  
alfresco dining area



For a virtual 360° tour of this boat visit

[www.broads.co.uk/boats/fair-monarch](http://www.broads.co.uk/boats/fair-monarch)

## Features

- Dual steering with excellent outside steering position
- Upper deck with cushioned seating and dining table
- Bow thruster for ease of mooring
- Satellite dome to receive free-sat TV channels
- PlayStation 4 (games not included)
- Additional TV in rear cabin
- Large rear cabin with walk around double berth
- 1 en-suite bathroom with whirlpool corner bath, overhead shower & domestic flush toilet
- 1 forward shower room with electric flush toilet

## Sleeping

3 doubles or 2 doubles and 2 singles made up of:

- 1 double in rear cabin
- 1 convertible double in saloon
- 1 double or 2 singles in forward cabin

*Please note: will not pass under Wroxham, Potter Heigham, Wayford or Beccles Old bridges. Will pass under other bridges at suitable tides. Cruiser height when prepared for passage under bridges 8ft 2in (2.49m)*

Wi-Fi: 3GB data free of charge - additional data available at own cost

Dates	Week	S/Break
Jan 04 - May 08	1110	780
May 09 - May 22	1420	1000
May 23 - May 29	1830	1285
May 30 - Jun 05	1625	1140
Jun 06 - Jun 19	1725	1210
Jun 20 - Jul 17	1830	1285
Jul 18 - Aug 21	2025	1415
Aug 22 - Aug 28	1830	1285
Aug 29 - Sep 18	1515	1060
Sep 19 - Dec 18	1110	780
Dec 19 - Jan 01	1420	1000
Fuel Deposit	£150	£75
Damage Waiver	£45	£45

For friendly customer service or to book call **01603 782207**

**P29**



# Fair PRESIDENT

STARTS FRIDAY, SATURDAY, MONDAY & TUESDAY



PREMIER CRUISER

SLEEPS  
**4 - 6**



CRUISER DIMENSIONS

L: 46ft (14.02m)

B: 12ft (3.66m)

Prestigious cruiser with space  
and luxury living in mind



For a virtual 360° tour of this boat visit  
[www.broads.co.uk/boats/fair-president](http://www.broads.co.uk/boats/fair-president)

## Features

- Dual steering with excellent outside steering position
- Alfresco dining area
- Bow thruster for ease of mooring
- Sunroof over saloon
- Satellite dome to receive Freesat TV channels
- Additional TVs in both cabins
- Xbox 360 (games not included)
- 1 en-suite bathroom with whirlpool corner bath with shower over bath and domestic flush toilet
- Full height shower room with domestic flush toilet
- Forward en-suite with electric flush toilet

## Sleeping

3 doubles or 2 doubles and 2 singles made up of:

- 1 double in rear cabin
- 1 convertible double in saloon
- 1 double or 2 singles in forward cabin

*Please note: will not pass under Wroxham, Potter Heigham, Wayford or Beccles Old bridges. Will pass under other bridges at suitable tides. Cruiser height when prepared for passage under bridges 8ft 2in (2.49m)*

Wi-Fi: 3GB data free of charge - additional data available at own cost

Dates	Week	S/Break
Jan 04 - May 08	1335	930
May 09 - May 22	1700	1180
May 23 - May 29	2185	1530
May 30 - Jun 05	1940	1355
Jun 06 - Jun 19	2065	1445
Jun 20 - Jul 17	2185	1530
Jul 18 - Aug 21	2425	1700
Aug 22 - Aug 28	2185	1530
Aug 29 - Sep 18	1820	1275
Sep 19 - Dec 18	1335	930
Dec 19 - Jan 01	1700	1180
Fuel Deposit	£150	£75
Damage Waiver	£45	£45

P30

For more information or to book online visit [www.broads.co.uk](http://www.broads.co.uk)



# Fair SOVEREIGN

STARTS FRIDAY, SATURDAY, MONDAY & TUESDAY



PREMIER CRUISER

SLEEPS  
**4 - 6**



Luxurious cruiser with outside dining area, perfect for the whole family



CRUISER DIMENSIONS

L: 40ft (12.19m)

B: 12ft (3.66m)



For a virtual 360° tour of this boat visit  
[www.broads.co.uk/boats/fair-sovereign](http://www.broads.co.uk/boats/fair-sovereign)

## Features

- Dual steering with excellent outside steering position
- Upper deck with cushioned seating and dining table
- Bow thruster for ease of mooring
- Satellite dome to receive Freesat TV channels
- Playstation 4 (games not included)
- Additional TV in aft cabin
- Large rear cabin with walk around double berth
- 1 en-suite bathroom with whirlpool corner bath, overhead shower and domestic flush toilet
- 1 forward shower room with electric flush toilet

## Sleeping

3 doubles or 2 doubles and 2 singles made up of:

- 1 double in rear cabin
- 1 convertible double in saloon
- 1 double or 2 singles in forward cabin

*Please note: will not pass under Wroxham, Potter Heigham, Wayford or Beccles Old bridges. Will pass under other bridges at suitable tides. Cruiser height when prepared for passage under bridges 8ft 2in (2.49m)*

Wi-Fi: 3GB data free of charge - additional data available at own cost

Dates	Week	S/Break
Jan 04 - May 08	1180	825
May 09 - May 22	1490	1045
May 23 - May 29	1915	1335
May 30 - Jun 05	1700	1195
Jun 06 - Jun 19	1810	1270
Jun 20 - Jul 17	1915	1335
Jul 18 - Aug 21	2130	1490
Aug 22 - Aug 28	1915	1335
Aug 29 - Sep 18	1600	1115
Sep 19 - Dec 18	1180	825
Dec 19 - Jan 01	1490	1045
Fuel Deposit	£150	£75
Damage Waiver	£45	£45

For friendly customer service or to book call **01603 782207**

**P31**



# Fair COUNTESS

STARTS FRIDAY, SATURDAY, MONDAY & TUESDAY

SLEEPS  
**4 - 6**



Modern, stylish family cruiser  
with easy stern access



CRUISER DIMENSIONS

L: 40ft (12.19m)

B: 12ft (3.66m)



For a virtual 360° tour of this boat visit

[www.broads.co.uk/boats/fair-countess](http://www.broads.co.uk/boats/fair-countess)

## Features

- Raised central steering position
- Electrically operated sliding canopy over saloon
- Easy stern access
- X-Box 360 (games not included)
- 2 shower rooms, 1 en-suite with electric flush toilets

## Sleeping

3 doubles or 2 doubles and 2 singles made up of:

- 1 double and 1 single in rear cabin
- 1 convertible double in the saloon
- 1 double or 2 singles in forward cabin

*Please note: will not pass under Potter Heigham bridge. Will pass under other bridges at suitable tides. Cruiser height when prepared for passage under bridges 6ft 10in (2.08m)*

Dates	Week	S/Break
Jan 04 - May 08	<b>875</b>	<b>625</b>
May 09 - May 22	<b>1105</b>	<b>780</b>
May 23 - May 29	<b>1435</b>	<b>1010</b>
May 30 - Jun 05	<b>1260</b>	<b>890</b>
Jun 06 - Jun 19	<b>1360</b>	<b>960</b>
Jun 20 - Jul 17	<b>1435</b>	<b>1010</b>
Jul 18 - Aug 21	<b>1605</b>	<b>1110</b>
Aug 22 - Aug 28	<b>1435</b>	<b>1010</b>
Aug 29 - Sep 18	<b>1205</b>	<b>835</b>
Sep 19 - Dec 18	<b>875</b>	<b>625</b>
Dec 19 - Jan 01	<b>1105</b>	<b>780</b>
Fuel Deposit	£130	£65
Damage Waiver	£45	£45



# Fair DUKE

STARTS SATURDAY & TUESDAY

SLEEPS  
**4 - 6**



CRUISER DIMENSIONS

L: 40ft (12.19m)

B: 12ft (3.66m)

Ideal for families or groups with easy access all on one level throughout



For a virtual 360° tour of this boat visit  
[www.broads.co.uk/boats/fair-duke](http://www.broads.co.uk/boats/fair-duke)

## Features

- Forward steering position
- Split sliding canopy
- Single level throughout
- PlayStation 3 (games not included)
- 2 shower rooms, 1 en-suite with electric flush toilets

## Sleeping

2 doubles and 2 singles made up of:

- 1 double and 1 single in rear cabin
- 2 singles in centre cabin
- 1 convertible double in saloon

*Passes under all bridges at suitable tides.  
Cruiser height when prepared for  
passage under bridges 6ft 10in (2.08m)*

Dates	Week	S/Break
Jan 04 - May 08	825	580
May 09 - May 22	1055	750
May 23 - May 29	1360	955
May 30 - Jun 05	1205	840
Jun 06 - Jun 19	1265	895
Jun 20 - Jul 17	1365	955
Jul 18 - Aug 21	1500	1055
Aug 22 - Aug 28	1365	955
Aug 29 - Sep 18	1130	795
Sep 19 - Dec 18	825	580
Dec 19 - Jan 01	1055	750
Fuel Deposit	£130	£65
Damage Waiver	£45	£45

For friendly customer service or to book call **01603 782207**

**P33**



# Fair COMMISSIONER

STARTS FRIDAY, SATURDAY, MONDAY & TUESDAY



PREMIER CRUISER

SLEEPS  
**4 - 6**

**NEW  
2016**



Spacious cruiser with outside sun-lounger and dining area, perfect for two couples



CRUISER DIMENSIONS

L: 44ft (13.41m)

B: 12ft (3.66m)



For a virtual 360° tour of this boat visit

[www.broads.co.uk/boats/fair-commissioner](http://www.broads.co.uk/boats/fair-commissioner)

## Features

- Dual steering with excellent outside seating, dining area and sun lounger
- Sunroof over the saloon
- Easy stern access
- Bow thruster for ease of mooring
- Satellite dome to receive Freesat TV channels
- PlayStation 4 (games not included)
- Spacious saloon and galley
- 2 en-suite shower rooms with enclosed, full height showers and electric flush toilets
- Electric anchor winch

## Sleeping

3 doubles, or 2 doubles and 2 singles made up of:

- 1 double in rear cabin
- 1 convertible double in saloon
- 1 double or 2 singles in forward cabin

*Please note: will not pass under Wroxham, Potter Heigham, Wayford or Beccles Old bridges. Will pass under other bridges at suitable tides. Cruiser height when prepared for passage under bridges 7ft 10in (2.39m)*

Wi-Fi: 3GB data free of charge - additional data available at own cost

Dates	Week	S/Break
Jan 04 - May 08	1360	945
May 09 - May 22	1730	1205
May 23 - May 29	2230	1565
May 30 - Jun 05	1980	1380
Jun 06 - Jun 19	2105	1490
Jun 20 - Jul 17	2230	1565
Jul 18 - Aug 21	2470	1730
Aug 22 - Aug 28	2230	1565
Aug 29 - Sep 18	1855	1300
Sep 19 - Dec 18	1360	945
Dec 19 - Jan 01	1730	1205
Fuel Deposit	£150	£75
Damage Waiver	£45	£45



# Fair MAJESTY

STARTS FRIDAY, SATURDAY, MONDAY & TUESDAY



PREMIER CRUISER

SLEEPS  
**6**



First class cruiser, ideal for a family or group of friends



CRUISER DIMENSIONS

L: 44ft (13.41m)

B: 12ft (3.66m)



For a virtual 360° tour of this boat visit  
[www.broads.co.uk/boats/fair-majesty](http://www.broads.co.uk/boats/fair-majesty)

## Features

- Raised central steering position
- Sliding canopy over saloon
- Easy stern access
- Bow thruster for easy mooring
- Satellite dome to receive Freesat TV channels
- PlayStation 4 (games not included)
- Large separate galley and dining area
- 2 shower rooms, one en-suite and electric flush toilets

## Sleeping

3 doubles or 2 doubles and 2 singles made up of:

- 1 double in rear cabin
- 1 double in centre cabin
- 1 double or 2 singles in forward cabin

*Please note: will not pass under Potter Heigham bridge. Will pass under other bridges at suitable tides. Cruiser height when prepared for passage under bridges 7ft (2.13m)*

Wi-Fi: 3GB data free of charge - additional data available at own cost

Dates	Week	S/Break
Jan 04 - May 08	1225	850
May 09 - May 22	1555	1085
May 23 - May 29	1995	1395
May 30 - Jun 05	1770	1245
Jun 06 - Jun 19	1880	1315
Jun 20 - Jul 17	1995	1395
Jul 18 - Aug 21	2210	1545
Aug 22 - Aug 28	1995	1395
Aug 29 - Sep 18	1655	1160
Sep 19 - Dec 18	1225	850
Dec 19 - Jan 01	1555	1085
Fuel Deposit	£150	£75
Damage Waiver	£45	£45

For friendly customer service or to book call **01603 782207**

**P35**



# Fair STATESMAN

STARTS FRIDAY, SATURDAY, MONDAY & TUESDAY



PREMIER CRUISER

SLEEPS  
6 - 8



CRUISER DIMENSIONS

L: 44ft (13.41m)

B: 12ft (3.66m)



A real head turner with outside seating, sun-lounger and dining area



For a virtual 360° tour of this boat visit

[www.broads.co.uk/boats/fair-statesman](http://www.broads.co.uk/boats/fair-statesman)

## Features

- Dual steering with excellent outside seating area complete with sun lounger suitable for the whole party
- Sunroof over the saloon
- Easy stern access
- Bow thruster for ease of mooring
- Satellite dome to receive Freesat TV channels
- PlayStation 4 (games not included)
- Spacious saloon and galley
- 3 shower rooms, 1 en-suite with electric flush toilets

## Sleeping

4 doubles or 3 doubles, 2 singles made up of:

- 1 double in rear cabin
- 1 double in rear mid cabin
- 1 convertible double in saloon
- 1 double or 2 singles in forward cabin

*Please note: will not pass under Wroxham, Potter Heigham, Wayford or Beccles old bridges. Will pass under other bridges at suitable tides. Cruiser height when prepared for passage under bridges 7ft 10in (2.39m)*

Wi-Fi: 3GB data free of charge - additional data available at own cost

Dates	Week	S/Break
Jan 04 - May 08	1455	1005
May 09 - May 22	1850	1320
May 23 - May 29	2375	1700
May 30 - Jun 05	2100	1490
Jun 06 - Jun 19	2220	1595
Jun 20 - Jul 17	2375	1700
Jul 18 - Aug 21	2665	1890
Aug 22 - Aug 28	2375	1700
Aug 29 - Sep 18	2000	1420
Sep 19 - Dec 18	1455	1005
Dec 19 - Jan 01	1850	1320
Fuel Deposit	£150	£75
Damage Waiver	£45	£45



# Fair ADMIRAL

STARTS FRIDAY, SATURDAY, MONDAY & TUESDAY

SLEEPS  
**6 - 8**



CRUISER DIMENSIONS

L: 40ft (12.19m)

B: 12ft (3.66m)

Stylish cruiser, ideal  
for larger groups



For a virtual 360° tour of this boat visit  
[www.broads.co.uk/boats/fair-admiral](http://www.broads.co.uk/boats/fair-admiral)

## Features

- Dual steering with excellent outside steering position
- Upper deck with cushioned seating and dining table
- Sunroof over saloon
- Bow thruster for ease of mooring
- Satellite dome to receive Freesat TV channels.
- PlayStation 4 (games not included)
- 2 shower rooms, 1 of them having an enclosed shower with electric flush toilets
- An additional electric flush toilet and basin as en-suite for the rear cabin

## Sleeping

4 doubles or 3 doubles and 2 singles made up of:

- 1 double in rear cabin
- 1 double in centre rear cabin
- 1 convertible double in saloon
- 1 double or 2 singles in forward cabin

*Please note: will not pass under Wroxham, Potter Heigham, Wayford or Beccles Old bridges. Will pass under other bridges at suitable tides. Cruiser height when prepared for passage under bridges 8ft 2in (2.49m)*

Wi-Fi: 3GB data free of charge - additional data available at own cost

Dates	Week	S/Break
Jan 04 - May 08	1185	825
May 09 - May 22	1505	1055
May 23 - May 29	1935	1355
May 30 - Jun 05	1710	1210
Jun 06 - Jun 19	1830	1275
Jun 20 - Jul 17	1935	1355
Jul 18 - Aug 21	2140	1495
Aug 22 - Aug 28	1935	1355
Aug 29 - Sep 18	1610	1120
Sep 19 - Dec 18	1185	825
Dec 19 - Jan 01	1505	1055
Fuel Deposit	£150	£75
Damage Waiver	£45	£45

For friendly customer service or to book call **01603 782207**

**P37**



# Fair EMPEROR

STARTS SATURDAY & TUESDAY

SLEEPS

8



CRUISER DIMENSIONS

L: 44ft (13.41m)

B: 12ft (3.66m)

An excellent cruiser, ideal for larger groups



For a virtual 360° tour of this boat visit [www.broads.co.uk/boats/fair-emperor](http://www.broads.co.uk/boats/fair-emperor)

## Features

- Dual steering with excellent outside seating area
- Upper deck with cushioned seating and table
- Sunroof over saloon
- Easy stern access
- Bow thruster for ease of mooring
- Satellite dome to receive free-sat TV channels
- Spacious saloon and galley
- PlayStation 4 (games not included)
- 3 showers, 1 en-suite with electric flush toilets

## Sleeping

4 doubles or 2 doubles, 4 singles made up of:

- 1 double or 2 singles in rear cabin
- 1 double in rear middle cabin
- 1 double in forward middle cabin
- 1 double or 2 singles in forward cabin

*Please note: will not pass under Wroxham, Potter Heigham, Wayford or Beccles Old bridges. Will pass under other bridges at suitable tides. Cruiser height when prepared for passage under bridges 7ft 10in (2.39m)*



Dates	Week	S/Break
Jan 04 - May 08	1360	940
May 09 - May 22	1720	1210
May 23 - May 29	2225	1555
May 30 - Jun 05	1975	1375
Jun 06 - Jun 19	2105	1470
Jun 20 - Jul 17	2225	1555
Jul 18 - Aug 21	2465	1725
Aug 22 - Aug 28	2225	1555
Aug 29 - Sep 18	1850	1295
Sep 19 - Dec 18	1360	940
Dec 19 - Jan 01	1720	1210
Fuel Deposit	£150	£75
Damage Waiver	£55	£55

Wi-Fi: 3GB data free of charge - additional data available at own cost



# Fair EMPRESS

STARTS FRIDAY, SATURDAY, MONDAY & TUESDAY

SLEEPS  
**7-11**



CRUISER DIMENSIONS

L: 46ft (14.02m)

B: 12ft (3.66m)

Modern cruiser with adaptable living accommodation for a larger party



For a virtual 360° tour of this boat visit  
[www.broads.co.uk/boats/fair-empress](http://www.broads.co.uk/boats/fair-empress)

## Features

- Raised central steering position
- Electrically operated canopy over saloon
- Easy stern access
- Comfortable family space, offering open plan saloon, galley and dinette
- PlayStation 4 (games not included)
- 3 shower rooms, 1 en-suite with electric flush toilets

## Sleeping

4 doubles, 3 singles or 3 doubles, 4 singles made up of:

- 2 double rear cabins
- 1 single rear cabin
- 2 convertible doubles and 1 single in open plan saloon/dinette
- 1 double or 2 singles in forward cabin

*Please note: will not pass under Potter Heigham bridge. Will pass under other bridges at suitable tides. Cruiser height when prepared for passage under bridges 6ft 10in (2.08m)*

Wi-Fi: 3GB data free of charge - additional data available at own cost

Dates	Week	S/Break
Jan 04 - May 08	1260	875
May 09 - May 22	1595	1115
May 23 - May 29	1825	1275
May 30 - Jun 05	1825	1275
Jun 06 - Jun 19	1825	1275
Jun 20 - Jul 17	1825	1275
Jul 18 - Aug 21	2285	1595
Aug 22 - Aug 28	1825	1275
Aug 29 - Sep 18	1710	1195
Sep 19 - Dec 18	1260	875
Dec 19 - Jan 01	1595	1110
Fuel Deposit	£130	£65
Damage Waiver	£55	£55

For friendly customer service or to book call **01603 782207**

**P39**



# HOLIDAY HOMES

## in the Broads National Park



**If you want to enjoy all that the Broads National Park has to offer but prefer to stay on dry land, then look no further than a self-catering break in one of our delightful cottages, apartments or penthouses in Wroxham - "The Capital of the Broads."**

Most of our comfortably furnished holiday homes enjoy a stunning waterside location with views of our busy marina or the River Bure and Wroxham Bridge. Simply sit back, relax and watch the world and the wildlife go by. Better still, select a holiday cottage with its own waterside garden and you can literally fish from your back yard!

Bure Lodge is situated in a small development opposite our boatyard from where you can enjoy views over a private marina from the first and second floors.

All our holiday homes are conveniently located only a couple of minutes' walk from the centre of the village - which has everything you could possibly need for the perfect break. There is a wide range of shops including "The World's Largest Village Store" - Roys of Wroxham (which has an excellent food hall plus fashion, gift and many other departments) - a bank,

Post Office and a great selection of pubs, restaurants and takeaways.

No holiday would be complete without taking to the water and you can enjoy a Broads Tours river trip on one of our fleet of passenger vessels, or hire a self-drive day boat direct from our marina! You'll find details of special offers and discounts on page 52.

Wroxham is the perfect base to explore not only a plethora of activities in the Broads National Park but also Norfolk's famous coastline and magnificent beaches. Our staff pride themselves on helping you to plan the perfect holiday, inside your holiday home you will find a welcome folder that includes details of local attractions, eating establishments and much more!

We are sure you will love our holiday cottages. Many of our customers return year-after-year. If you decide to visit again don't forget that you can benefit from our returning customer loyalty discount!

*There's no better waterside location to experience the Broads National Park and Norfolk coast!*



““ Lovely cottages  
immaculately cleaned  
before occupation.  
Very comfortable too ””

The Bates Party, Benfleet  
Cordon Rouge – August 2017



## 25% OFF RIVER TRIPS\*

Broads Tours operates a variety of river trips throughout the main season and offers a 25% discount to residents on the daily tours.



## FREE DAY BOAT AT SELECTED TIMES OF THE YEAR\*

Stay in one of our holiday homes and enjoy a FREE day boat on selected dates: from Monday 1 April - Friday 24 May, Monday 3 June - Friday 19 July and Saturday 7 September - Thursday 31 October 2019 (half a day FREE for short breaks, full day FREE for weekly holidays).

\* River trips and day boats are not available between 1 November and 31 March. Discount not available on special or themed tours.



# FAIRVIEW Lodge

STARTS SATURDAY & TUESDAY

SLEEPS

8



Luxurious four bedroom waterside holiday home over three floors



## Features

- Open plan lounge/dining room and fully fitted kitchen with integrated appliances and microwave
- Large LCD TV/DVD and XBOX 360
- First floor: One double en-suite bedroom, one twin bedroom and family bathroom with electric shower over bath
- Second floor: One double bedroom with en-suite toilet and shower and one twin
- Radiator central heating
- Bed linen and towels provided
- Enclosed garden and deck area with seating for relaxing and watching the world go by
- Parking for two cars only

*Travel cot and highchair available on request.*

*Sorry, no smoking or pets allowed in Fairview Lodge.*

Available all year for short breaks,  
unique Christmas and New Year holidays

Dates	Week	S/Break
Jan 01 - Jan 03	1260	880
Jan 04 - May 08	780	550
May 09 - May 22	895	630
May 23 - May 29	1085	760
May 30 - Jun 05	975	685
Jun 06 - Jun 19	1080	755
Jun 20 - Jul 17	1315	915
Jul 18 - Aug 21	1405	985
Aug 22 - Aug 28	1215	850
Aug 29 - Sep 18	1030	715
Sep 19 - Dec 18	810	560
Dec 19 - Jan 01	1300	905



# CORDON ROUGE Cottages

STARTS SATURDAY & TUESDAY

SLEEPS

4



## Features

### Numbers 1 to 5

- Modern fitted kitchen with microwave and integrated appliances, including dishwasher
- Open plan sitting/dining room
- One twin-bedded room
- One room double bed
- Bathroom with bath (electric shower over), toilet and hand basin
- Night storage heating
- Bed linen and towels provided
- Outside decking with garden furniture
- Parking for one car only

*Travel cot and highchair available on request.*

*Sorry, pets are not allowed in our Cordon Rouge Cottages.*

Dates	Week	S/Break
Jan 01 - Jan 03	915	645
Jan 04 - May 08	565	400
May 09 - May 22	630	440
May 23 - May 29	785	545
May 30 - Jun 05	700	495
Jun 06 - Jun 19	780	540
Jun 20 - Jul 17	950	665
Jul 18 - Aug 21	975	675
Aug 22 - Aug 28	860	620
Aug 29 - Sep 18	745	515
Sep 19 - Dec 18	580	410
Dec 19 - Jan 01	940	665

For friendly customer service or to book call **01603 782207**

P43

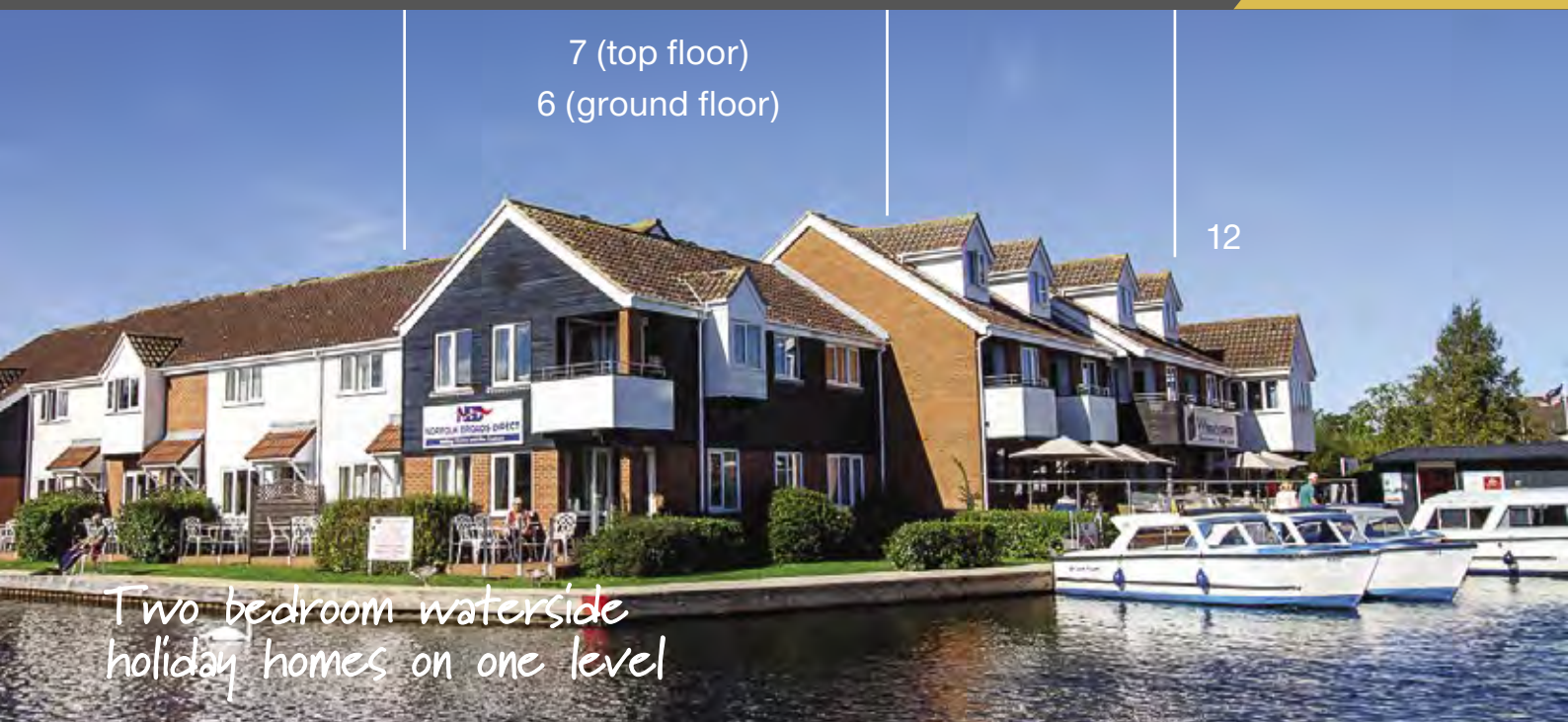


# CORDON ROUGE Apartments

STARTS SATURDAY & TUESDAY

SLEEPS

4



## Features

### Numbers 6 and 7

- No.6 is situated on the ground floor and has French doors which lead on to a decking area with garden furniture
- No.7 is situated on the first floor (access via external steps) and has a balcony overlooking the river
- Open plan lounge/dining room and fitted kitchen with integrated appliances and microwave
- One double and one twin bedroom
- Bed linen and towels provided
- Fitted shower room, toilet and hand basin
- Night storage heating
- Parking for one car only

## Features

### Number 12

- Accessed via an exterior staircase with picture windows overlooking the river and bridge
- Open plan lounge/dining room and fitted kitchen with integrated appliances and microwave
- One double bedroom and one twin bedroom, both with en-suite shower, toilet and hand basin
- Bed linen and towels provided
- Night storage heating
- Parking for one car only

*Travel cot and highchair available on request.*

*Sorry, pets are not allowed in our Cordon Rouge apartments.*

Dates	Week	S/Break
Jan 01 - Jan 03	770	540
Jan 04 - May 08	485	340
May 09 - May 22	535	375
May 23 - May 29	670	465
May 30 - Jun 05	595	415
Jun 06 - Jun 19	665	465
Jun 20 - Jul 17	805	565
Jul 18 - Aug 21	850	595
Aug 22 - Aug 28	740	520
Aug 29 - Sep 18	635	440
Sep 19 - Dec 18	500	345
Dec 19 - Jan 01	795	555

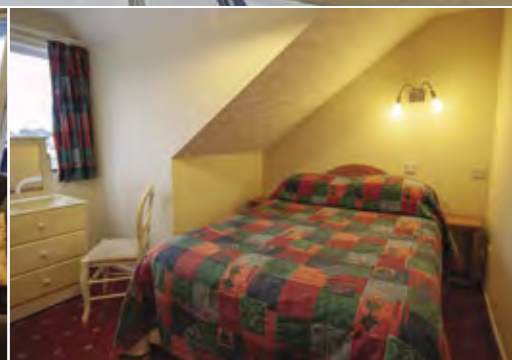


# WHERRYMAN'S Penthouses

STARTS SATURDAY & TUESDAY

SLEEPS

2



## Features

Numbers 8 to 11

- Situated on the first floor (access via external steps) with a balcony overlooking the river and Wroxham bridge
- Open plan sitting/dining area and modern fitted kitchen with microwave
- Double bedroom on the second floor
- Bed linen and towels provided
- Bathroom with bath and separate electric shower cubicle, toilet and hand basin
- Night storage heating
- Parking for one car only

*Travel cot and highchair available on request.*

*Please note that the second floor has some restricted head room.*

*Sorry, pets are not allowed in our Wherryman's Penthouses*

Dates	Week	S/Break
Jan 01 - Jan 03	645	455
Jan 04 - May 08	400	280
May 09 - May 22	440	310
May 23 - May 29	545	390
May 30 - Jun 05	495	345
Jun 06 - Jun 19	540	385
Jun 20 - Jul 17	665	465
Jul 18 - Aug 21	675	475
Aug 22 - Aug 28	585	425
Aug 29 - Sep 18	515	360
Sep 19 - Dec 18	410	285
Dec 19 - Jan 01	665	470

For friendly customer service or to book call **01603 782207**

P45



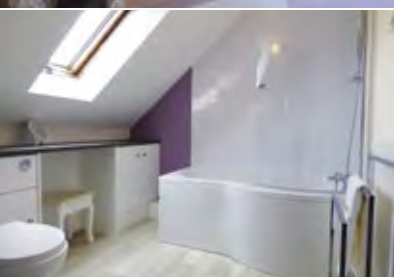
# BURE Lodge

STARTS FRIDAY & MONDAY

SLEEPS  
**5+2**



Three bedroom holiday home  
on three levels



Located in Bure Close, Wroxham  
(Opposite Norfolk Broads Direct  
boatyard)

## Features

### Ground Floor

- One twin bedroom
- One single bedroom
- Day room with double sofa bed
- Family bathroom with shower over the bath

### First Floor

- Fully fitted kitchen with breakfast dining area
- Dishwasher
- Spacious open plan lounge and dining area
- TV, DVD and X-Box One (games not included)

### Second Floor

- Spacious double bedroom
- Ensuite bathroom with shower over bath
- Bed linen and towels provided

### Outside

- Small enclosed rear garden
- Washing machine in garage
- Garage for one car with additional outside parking for further car


*Travel cot and highchair available on request*

*Maximum of two dogs allowed in Bure Lodge at a cost of £40 per week and £25 per short break for each dog.*

*Sorry, smoking is not allowed in Bure Lodge.*

Dates	Week	S/Break
Jan 01 - Jan 03	915	645
Jan 04 - May 08	565	400
May 09 - May 22	630	440
May 23 - May 29	785	545
May 30 - Jun 05	700	495
Jun 06 - Jun 19	780	540
Jun 20 - Jul 17	950	665
Jul 18 - Aug 21	975	675
Aug 22 - Aug 28	860	620
Aug 29 - Sep 18	745	515
Sep 19 - Dec 18	580	410
Dec 19 - Jan 01	940	665





“ Absolutely fabulous.  
The staff at NBD were  
amazing from start to finish. Can't  
wait for next year already booked.”

Mrs Burrup, Fair Jubilee  
July 2018

## Discover more about Norfolk Broads Direct and the Broads on our social media sites

See what others have said about their experiences and reviews,  
or take a look at some of the videos on our YouTube channel.

We would love it if you shared some of your pics!



Upload your Broads holiday  
snaps on our Facebook page



Norfolk Broads Direct  
Broads Tours



@nbdWroxham  
@BroadsTours



Norfolk\_Broads\_Direct





# Broads Tours RIVER TRIPS

*A river trip or a self-drive day boat is the perfect way to experience the Broads before booking a holiday...*

Join us on board one of our passenger vessels for the ideal mix of relaxing scenery and leisure time. As we gently make our way along Norfolk's stunning waterways, we offer live commentary so you can find out more about this fantastic area. Plus, there are light refreshments and a licensed bar – perfect.



Wheelchair users are welcome on all our scheduled river trips – we recommend pre-booking.

Dogs are welcome on all our scheduled river trips at a cost of only £1 per dog.

## Superb music as you sail

On selected evenings during July and August you can enjoy an evening music cruise. Whether you prefer live jazz or our popular boogie nights, take a seat and watch the sun set over the water, accompanied by great music. There's a licensed bar, too.

## Santa cruise

Each December, a special visitor lands his sleigh on the top deck of the Vintage Broadman and children delight in meeting the man in red while grown-ups take in the winter scenery. A visit from Santa wouldn't be complete without presents, and he has a gift for each child on board.

## Just for you

Planning a party? Add a touch of Broads magic to your celebration by hiring one of our passenger boats. If you're planning a special occasion, we can help you make it truly memorable.

For details please visit our website

**[www.broadstours.co.uk](http://www.broadstours.co.uk)**

or call us on **01603 782207**





*Fun and adventure round every corner!*



Large electric boat



Standard day boat



Day cruiser

# SELF-DRIVE DAY BOATS

If you'd rather see the Broads at your own pace, then hire one of our day boats. Take a picnic and spend some quality time with friends or family enjoying the sights and sounds of the Broads.

You can choose from three different styles of self-drive day boats:

Our standard day boats seat up to eight people, are simple to operate and have a canvas "cabriolet-style" cover to protect you from the elements. They're available to hire by the hour, part or full day on a first-come, first-served basis from 09.00-17.30.

For a bigger group, how about one of our large electric boats? They're quiet, eco-friendly and seat up to 11 people. These are available for full day hire only (09.00-17.00) and pre-booking is essential.

Our most luxurious day craft give you the chance to dine in style as you cruise along. Our day cruisers seat up to eight people and are equipped with a two-ring hob, grill, refrigerator, sink and toilet. A split sliding canopy over the seating area allows alfresco dining on sunny days. Day cruisers are available for full day hire only (10.00-17.00) and pre-booking is essential.



One of our standard day boats has been specially modified to accommodate wheelchair users, fitted with an electric lift and easy-to-board ramp. If you'd like to hire this boat you'll need to book in advance – we usually recommend a minimum of three hours. A 300kg weight restriction applies when using the lift.



Dogs are welcome on all our day boats.

Whichever boat you choose, we hope you enjoy the chance to experience the magic of the Broads – and of course, if you want to visit again, we're always here to help!

For details please visit our website  
**[www.broadstours.co.uk](http://www.broadstours.co.uk)**  
 or call us on **01603 782207**





## The Broads National Park — everything you need to know about these enchanting waterways

Whether you are taking to the water on board one of our superb Faircraft Loynes cruisers, or whether you are staying by the water in one of our delightful holiday homes, we really want you to enjoy everything that the Broads National Park has to offer.

### Wildlife spotting

The Broads is home to 25% of the country's rarest species making this the perfect location for wildlife spotting. Look out for ducks, geese, great crested grebes, otters and kingfishers and if you are very lucky the beautiful swallowtail butterfly or even the elusive bittern, the Broads is home to them all and many more species besides.

### Coarse fishing

The Broads offers some of the best fishing around: the waterways and rivers are well-stocked with pike, perch, bream, roach and rudd. Please note that the coarse fishing season runs from 16 June to 14 March. You will need a current Environment Agency rod licence, which you can pick up at a Post Office or online at [www.environment-agency.gov.uk](http://www.environment-agency.gov.uk). For more information take a look at [www.broads.co.uk/norfolk-broads/fishing-on-the-broads](http://www.broads.co.uk/norfolk-broads/fishing-on-the-broads).

### Cycling

Hire bicycles and explore your surroundings, following miles of peaceful country lanes (and not many hills!). There's a network of cycle hire centres, many within easy reach of popular moorings. You'll find more information at [www.broads.co.uk/guide-to-the-broads/things-to-do-on-the-norfolk-broads/bike-and-canoe-hire](http://www.broads.co.uk/guide-to-the-broads/things-to-do-on-the-norfolk-broads/bike-and-canoe-hire)

### Canoeing

Discover the delights of Broadland's quieter corners in a canoe; see things from a different angle and closer to nature. If you fancy a few hours away from your cruiser, you can hire canoes from a number of locations offering access to some of the most tranquil spots. Find details of the canoe hire network at [www.broads.co.uk/guide-to-the-broads/things-to-do-on-the-norfolk-broads/bike-and-canoe-hire](http://www.broads.co.uk/guide-to-the-broads/things-to-do-on-the-norfolk-broads/bike-and-canoe-hire).

### Walking the Broads

Step off your cruiser and explore the Broads on foot, where you'll discover boardwalk paths through nature reserves and along the edges of the most scenic Broads and rivers. A network of long-distance footpaths criss-crosses the

region, following wonderfully scenic routes along the water and beyond. For more information, see [www.broads.co.uk/walks-around-the-broads](http://www.broads.co.uk/walks-around-the-broads).

### At the beach

The Broads stretch all the way to the coast – Great Yarmouth is a classic British seaside resort, with a vibrant sea front buzzing with shops, cafés and attractions, plus a historic old town. Further up the coast, the beaches of Horsey and Waxham attract seals during the winter and sunbathers in the summer. (Access via Potter Heigham bridge.)

### Activities for children

Children love the magic of the Broads - it's the perfect location for spotting wildlife, trying a spot of fishing or even sitting at the helm of your cruiser, (under the very close supervision of a grown up of course!)

Away from the waterways themselves, there are plenty of local attractions for families to enjoy from theme parks, narrow gauge trains to wildlife gardens. To check out our local attractions please see [www.broads.co.uk/guide-to-the-broads/things-to-do-on-the-norfolk-broads/family-fun](http://www.broads.co.uk/guide-to-the-broads/things-to-do-on-the-norfolk-broads/family-fun).

For on board activities take a look at our Broads kids pages. [www.broads.co.uk/kids/](http://www.broads.co.uk/kids/)

### Eating out

You'll find a whole lot of excellent places to eat and drink around the Broads, from pubs and restaurants to cosy tearooms. Whether you like locally sourced gourmet meals or traditional fish and chips, there's something for everyone. Check out our favourite eating establishments here: [www.broads.co.uk/guide-to-the-broads/eating-out-on-the-norfolk-broads](http://www.broads.co.uk/guide-to-the-broads/eating-out-on-the-norfolk-broads).

### Shopping, night life and Culture in Norwich

At the heart of the Broads you'll find a stunning historic city buzzing with culture, famous-name shops, excellent restaurants, nightlife and thriving arts scene. Don't miss Norwich's Norman Castle and Cathedral with the second highest spire in England. You can even moor in the city centre so you don't need to worry about parking!

Please note: All this information is available in greater detail in a specially prepared folder you'll find on board your cruiser or in your holiday home.



# Our commitment to the environment



We love the Broads and want all our guests to enjoy this magical landscape as much as we do. At Norfolk Broads Direct we go the extra mile to protect our surroundings. We've created a full environmental policy – here are some of the highlights:

- Reducing, reusing and recycling our waste and operating carefully considered recycling facilities.
- Protecting the water quality in the Broads by using eco-friendly cleaning products. On board our cruisers you'll find phosphate-free washing-up liquid and a fat trap to dispose of your cooking waste harmlessly.
- Many of our buildings are fitted with solar panels, providing sustainable energy for our offices, workshops and holiday homes.
- We harvest rainwater, reusing water for everything from our toilet block to watering plants.

## Connecting with wildlife

We're passionate about the wildlife that makes its home in the Broads National park, as we know many of our customers are!

That's why we are proud to be working in partnership with Norfolk Wildlife Trust as Gold Investors, helping to protect our wildlife for the future. Why not visit the NWT website to see how you can get involved in the great work that they do?

<https://www.norfolkwildlifetrust.org.uk/home>

At Norfolk Broads Direct we know how lucky we are to be working out on the river each day, watching nature changing with the seasons. You can share our best spots and follow the fortunes of our local otters, kingfishers, great crested grebes and much more by visiting our Nature blog.

<https://www.broadstours.co.uk/nature-blog/>



## Education

We believe that the shape of the Broads lies in the hands of young people, so education is very important. At Norfolk Broads Direct, we offer Discovery trips through our sister company Broads Tours for school children to learn and explore how the Broads is managed, how it has changed over the years and all the important wildlife that lives here.

For those hiring boats, we offer children activity packs and wildlife tick sheets to engage more with the environment.

## Loving the Broads



When you book a holiday with Norfolk Broads Direct, you're not just choosing a relaxing break on Britain's magical waterland – you're also caring for the Broads unique environment. For every Cruiser holiday that we provide, we donate £1 to the Love the Broads Charitable Trust. The Trust funds projects around the Broads that aim to protect and enhance the area for the benefit of our visitors and local communities alike.

We are delighted that our donations last year funded several different projects, including providing interpretation boards at Coltishall Lock, a wheelchair for the museum of the Broads and a delightful education booklet for children visiting Broads Tours and the Norfolk Wherry Trust. We also support a long term Love the Broads project to provide moorings at South Walsham Broad.

## Trees for boats

We are very proud that our team of boat builders and marine engineers build all our hire cruisers in our own boatyard right here in Wroxham!

To offset the impact on the environment of our boat building operation we plant a tree for each new boat that we build.

Norfolk Broads Direct trees can be seen at the popular Broadland locations of Salhouse Broad, Fairhaven Woodland and Water Gardens and at How Hill. Why not see if you can spot them!

Tree planting at How Hill with Sue Stephenson - Environment Design Supervisor, Broads Authority





# OFFERS & DISCOUNTS

For 2019 holidays we have extended our early booking offer  
**EARLY BOOKING OFFER - SAVE 5%**

Book your 2019 holiday before 30 November 2018 or your 2020 holiday before 31 October 2019 and save 5% off the brochure price



## RETURNING CUSTOMER LOYALTY DISCOUNT

We always love welcoming our customers back to the Broads, and as a special thank you we have a returning visitor loyalty discount scheme. Every time you holiday with us in 2019 you'll receive a unique voucher code, entitling you to a 5% discount off the hire terms of your next holiday. This could be a second or even third holiday in 2019 or a holiday in 2020 or 2021. Please note only one voucher code can be used per holiday. **Can be used in conjunction with early booking offer.**

## Booking a 2 week boating holiday?

### SAVE UP TO 15% OFF THE LOWEST PRICED WEEK!

Save 15% off the lowest priced week for a two week holiday starting before 20 June or after 29 August. Save 10% off the lowest priced week for a two week holiday starting between 20 June and 29 August 2019.



## 25% OFF RIVER TRIPS\*

Broads Tours offers a variety of river trips throughout the main season and offers a 25% discount to residents on the daily tours.

\* River trips and day boats are not available between November and 31 March. Discount not available on special and themed tours.



## 4 NIGHTS FOR THE PRICE OF 3

Book a four night mid-week break for the same price as a 3 night weekend break!

Mid-week breaks can start on either a Monday or a Tuesday.



## Save 10% off the second week

Stay in one of our lovely waterside holiday homes for a fortnight and save 10% off the second week price. Offer valid for all of our self-catering properties all year round.



## FREE day boat on selected dates\*

Stay in a cottage, apartment or penthouse and enjoy a **FREE** day boat on selected dates; from Mon 1 Apr - Fri 24 May, Mon 3 June - Fri 19 Jul & Sat 7 Sep - Thu 31 Oct 2019 (half a day **FREE** for short breaks, full day for weekly holidays).



# Booking Deposits & Information 2019

## HOLIDAY HOME PRICES 2019

Short breaks are available on all holiday homes and can start on either a Saturday for 3 nights or a Tuesday for 4 nights or Friday for 3 nights or Monday for 4 nights in Bure Lodge only.

### Holiday Home Takeover Times

Weekly holidays: Takeover time from 4pm and vacated by 9am.  
Short break: Takeover time from 2.30pm and vacated by 9am.

### Discounts available for holiday homes

Save with a second week discount. Save 10% off second and additional consecutive weeks.

### Initial Payments for all holiday homes

Holiday cost	Deposit
Up to £300	£105
£301 - £500	£125
£501 - £750	£150
£751 - £900	£170
£901 - £1400	£180
£1401 - £1900	£225
£1901 - £2500	£275
Over £2501	£325

## HIRE FLEET PRICES 2019

Included in your holiday costs are a Broadland map, fouled propeller insurance and outside parking for one car for cruisers up to 4-6 berth and two cars for 6+ berth cruisers. See below for additional car parking charges.

### Fuel Deposit

A fuel deposit is required on all hire cruisers in advance (see individual boat pages for amounts). At the end of your holiday, the balance of any fuel remaining will be repaid to you. Alternatively if you have used more fuel than the value of the deposit you will owe us the balance.

### Damage Waiver / Security Deposit for Hire Cruisers

The payment of a £45 waiver for up to a 6 berth boat and a £55 waiver for a 7 berth boat and over will free the hirer from any liability for accidental damage to the boat, its fittings or loss of its equipment. It does not cover damage or losses caused by negligence on the part of the hirer, or return of the boat in an unclean condition, which will incur an extra payment.

If you prefer to pay a security deposit rather than a damage waiver this must be stated on booking. The security deposit will be £500 for boats up to 6 - 8 berth, and £1000 for boats from 8 berth plus. Some party types will be required to pay a security deposit, these include but are not limited to, all male /all female parties and young mixed non-family groups. If such a party hires 2 or more boats, the security deposits paid will be treated as one deposit covering the whole party.

### Cruiser Takeover Times

#### Weekly holidays:

Takeover time from 4pm and vacated by 9am.

#### Short break:

Takeover time from 2.30pm and vacated by 9am. Please advise the yard of your arrival time as some cruisers may be ready earlier.

### Initial Payments for all Hire Cruisers

Holiday cost	Deposit
£301 - £500	£125
£501 - £750	£150
£751 - £900	£170
£901 - £1400	£180
£1401 - £1900	£225
£1901 - £2500	£275
Over £2501	£325

Please Note: Due to financial regulations we are not able to offer personal insurance cover.

### Optional Extras

Payable on arrival	Per week	Short break
Rowing dinghy	£50	£35
Sailing dinghy	£60	£40
Additional outside parking	£20	£10
Undercover parking	£25	£15
Pet charges	£40	£25

Optional extras are payable on arrival.

### Payment of Balance

Please note that the balance of hire terms should be paid 70 days (10 weeks) in advance of your holiday start date unless otherwise stated on the booking confirmation. Receipts are issued to all customers.

### Cancellation Protection included in brochure price

Cover is automatically provided against loss of your deposit and liability to pay the balance of hire charges if you have to cancel or curtail your holiday for certain unavoidable reasons. This is included in the brochure price.

### Qualifying Reasons for Cancellation of your Holiday

Death, illness, bodily injury, pregnancy or childbirth providing pregnancy commences after the insurance is effected. Jury service, witness call.

Redundancy, as long as the employment has been continuous with the same employer for at least two years. Cancellation of arranged leave in respect of a member of HM Forces or police.

Unexpected occupational posting within six weeks of the commencement date of the holiday or involving an occupational transfer in excess of 50 miles.

Fire, storm, flood, subsidence or malicious damage rendering the home uninhabitable.

Police requiring presence following a burglary or other incident at home or place of business.

Death, serious injury or serious illness of any member of your immediate family, fiancé(e), close business associate, partner or co-director.

Please note all of the above reasons must have arisen after you made your booking and must not have been within your knowledge at the time of booking. Evidence such as doctors certificates will be required.

### Winter Holidays

A limited number of cruisers are available for winter holidays. For more information, please call us on **01603 782207**

### Brochure Prices

All prices shown in our 2019 brochure are in pounds (£) sterling.

## BOOKING OFFICE OPENING HOURS

### March - End October

**Monday to Sunday** 08.00 - 17.30

### November to February

**Monday to Friday** 08.00 - 17.30

**Saturday** 09.00 - 14.00

**Sunday** 10.00 - 15.00

### Christmas and New Year

**24 - 27 December 2018 and 1 January 2019** Closed

Our 2019 luxury holiday cruisers and waterside holiday homes brochure is prepared many months in advance of the holiday season to which it relates, so changes may be made to the information contained in it. If any significant changes occur before you have booked, we will endeavour to tell you at the time of booking or pass on the necessary information to you. The prices contained in the brochure are correct at the time of going to press.

Whole experience wonderful.  
Your staff are 2nd to none, from the cleaners to engineers everybody was friendly, cheerful and helpful.

Mrs Sevens, Lowestoft  
Fair Prince - May 2018





## What happens when you arrive?

Your holiday with us begins the moment you arrive in Wroxham – our boatyard is adjacent to the river bridge. If you're holidaying in our waterside accommodation, simply park in the designated space for your property. Check-in takes place in our main office, where you can collect your keys plus a stylish and useful welcome jute bag. Inside your holiday home, you'll find a folder containing lots of useful information about the surrounding area, but if there's anything else you'd like to know, don't hesitate to ask our reception team.

If you've booked a hire cruiser, head to our Faircraft Loynes reception where we will check you in and give you a detailed map, a souvenir Broads Guide and your complimentary welcome bag. To help with unpacking, you can then park directly behind your cruiser. To save space on-board we recommend that you put your empty cases back in your car for the duration of your holiday. Alternatively pack in fold-away holdalls.

Any bedding you've requested will be on board, as well as two towels for each crew member and complimentary toiletries in each bathroom.

On board you'll also find a folder full of really useful information about the area to help you to make the most of your holiday.

### YOUR ON-BOARD COMPLIMENTARY WELCOME PACK



Contents may change

## How to find us:

### BY CAR

We are situated in Wroxham on the A1151, eight miles north-east of Norwich. The postcode for satnav is NR12 8RX.

### BY PUBLIC TRANSPORT

Take the train from Norwich station on the Bittern Line, which runs between Norwich and Sheringham. Hoveton and Wroxham station is the second stop. We are always happy to collect our customers and their luggage from Hoveton and Wroxham station. Please let us know when you make your booking.

[www.greateranglia.co.uk](http://www.greateranglia.co.uk)

You can also catch the bus from Norwich: First Group route 12 Pink Line or Konectbus route 5B.

[www.firstgroup.com](http://www.firstgroup.com) [www.konectbus.co.uk](http://www.konectbus.co.uk).

However you arrive, you can be sure of a warm, Norfolk Broads Direct welcome... and when you leave us, you'll come away with the feeling that you have experienced something truly magical!

For bookings please call  
**01603 782207** or book online  
[www.broads.co.uk](http://www.broads.co.uk)





# Terms & Conditions

Terms only when booked direct. This brochure is prepared many months before the holiday season to which it relates, so changes may be made to the information contained in it. If any significant changes occur before you have booked, we will endeavour to tell you at the time of booking or pass on the necessary information to you. The prices contained in the brochure are correct at time of going to press.

## 1. Your Contract

Your contract is with Norfolk Broads Direct Ltd (referred to throughout these terms & conditions as "NBD"). Any contract to hire a boat listed in this brochure and current supplements incorporates conditions below and is between NBD and you as the hirer. The contract does not take effect until NBD despatch written confirmation of your booking to you. The contract is made in England and is governed in all aspects by English Law.

## 2. Booking

All Correspondence will be sent to the address given on booking. NBD may refuse to accept a booking at its discretion and will not accept any booking by a person less than 18 years old. Please note we require a minimum of two adults per cruiser.

## 3. Payments

You must send the initial payment on booking. This payment comprises your booking deposit in part payment for the cost of your cruiser or holiday home and your Cancellation Protection payment (mandatory). It will be refunded if your booking is not confirmed. The balance of the holiday price must be received by NBD no later than 70 days before the holiday start date. If booking within 70 days, full payment must be made when booking. If booking within 14 days of the start date, full payment must be made by debit or credit card. It is not normal practice to send reminders and if final payment is not received as required, NBD may cancel the booking and apply charges (see para 9). Travel documents will not be released until full payment has been received by NBD. Post dated cheques are unacceptable and NBD may recover the cost of any bank charges or other costs incurred in handling dishonoured cheques, direct bank payments and foreign currencies.

## 4. Low Initial Payment

When NBD offer opportunities to book holidays with a low initial payment the following conditions apply:

- the remaining balance of your holiday cost will become payable as shown in para 3 above;
- if you cancel your booking (see para 9), you will be required to pay the balance of the deposit which would normally have been payable in the absence of any promotion.

## 5. Price Guarantee

NBD guarantees that there will be no surcharges within 70 days of your departure but reserves the right to alter the price of any of its holidays before you make your booking.

## 6. Hire Terms

All hire terms are inclusive of VAT and quoted in £ sterling per boat per week, equipped as described unless otherwise stated. As soon as the booking is confirmed by NBD the hire terms are guaranteed unless there is a change in the rate of VAT.

## 7. Insurance

Insurance against cancellation or curtailment of your holiday is mandatory – this payment is included in the brochure price and details of the policy can be found overleaf. We also recommend that you have adequate personal insurance cover for your holiday needs. As we are no longer able to offer this service you will need to make independent provision.

## 8. Alterations by You

If you wish to change your booking after NBD has issued your confirmation, NBD will do its best to help but has no obligation to make any change other than to allow you or any member of your party to transfer the booking to another party or parties, provided that written notice is received from the person who made the booking. Transfer from one boat to another within this brochure will be possible. If NBD are able to make changes, an administration fee of £35 may be charged. Please note that major changes may be treated by NBD as a cancellation by you and will be subject to charges referred to in para 9. Any change you wish to make to your holiday once it has commenced is your sole responsibility.

## 9. Cancellation by You

If you are forced to cancel your booking you must notify NBD immediately by telephone and send written confirmation (signed by the person who made the booking) by Recorded Delivery to the Wroxham boatyard address, enclosing your booking confirmation. The cancellation will be effective from the date written confirmation is received by NBD. If the reason for cancellation is within the terms of the NBD cancellation protection, you will receive a refund of monies paid less the cancellation protection fee and a cancellation administration fee of £35. If the reason for cancellation falls outside its terms, NBD will make a charge as below.

- cancellation 70 days or more prior to start date: NBD will retain the initial payment only. If you have not paid the full initial payment shown in the brochure at the time of booking, you must pay the shortfall;
- cancellation less than 70 days before start date (or if NBD cancels because you fail to pay the balance of the holiday price as required by para 3) - you will be liable to pay the whole balance less any hire charges NBD may be able to recover by reletting the boat. If you have received your Norfolk Broads Direct Travel documents, no refund (if due) will be made until these are received back by NBD. It is not possible to make refunds for any services booked but not used.

## 10. Alterations by NBD

NBD reserves the right to make changes when they become unavoidable or necessary. If a material change is made to your holiday NBD will inform you as soon as reasonably possible. A material change is one that is a significant change of location or a change of boat to that of a lower category or price. In the event of material change you may choose to:

- accept the alteration and the contract will be varied accordingly.

- purchase an alternative NBD holiday (where available) with credit being given for the price of the cancelled holiday; or
- cancel and receive a refund of money you have paid.

## 11. Cancellation by NBD

NBD will not cancel your holiday within 70 days of your departure unless it has to for reasons in para 13 or unless payment is not received as per para 3. NBD may cancel your holiday at its absolute discretion on or before the date when payment of the full holiday price becomes due. If NBD cancel, they will inform you as soon as reasonably possible and you will be offered either:

- a holiday of comparable standard (if available) together with a full refund of any price difference; or
- a full refund of any monies you have paid. NBD may at its absolute discretion refuse to hand over a boat or terminate a holiday where in the opinion of NBD a person or group is likely to cause damage, distress or annoyance to other persons or property. In such event NBD will be under no obligation to refund, compensate, or indemnify you.

## 12. Compensation for cancellation or material alteration

Subject to para 11(a), in addition to refunding monies paid, NBD will compensate you where it has to cancel or make a material change as follows:

Period when notice of cancellation or alteration is given prior to departure	Compensation per member of your holiday party (excluding infants)
More than 70 days	£15
70 – 29 days	£25
28 – 15 days	£35
14 days or less	£50

Compensation for children invoiced at reduced prices will be paid on a pro rata basis. No further claims for compensation or expenses will be considered.

## 13. Important note

No compensation will be paid by NBD where cancellation or material change arises from:

- Unusual or unforeseeable circumstances beyond NBD's control such as war, threat of war, riot, civil strife, industrial dispute, terrorist activity, natural or nuclear disaster, fire or adverse weather conditions including flooding of waterways.
- Your failure to pay the balance of the holiday price within the time stipulated.
- As a result of your behaviours as set out in para 9 above.

## 14. Start and finish of your holiday

- unless otherwise stated, the time of boarding the boat is 4pm on the hire start date;
- in the event of mechanical failure, the right is reserved to delay departure until a repair is effected;
- NBD will give you a demonstration and explain the controls of the boat and its equipment. You must notify NBD of any faults in the equipment of the boat identified either before or after the boat leaves the boatyard so that they can be rectified;
- non-arrival at the boatyard by mid-day on the day following start date without prior notification shall entitle NBD to treat the booking as cancelled as per para 9;
- unless otherwise stated you must return the boat (with all gear and equipment) to the boatyard in a clean and tidy condition by 9am on the final day of hire. A charge will be made if the boat is returned late or is not clean and tidy.

## 15. Accidents

You are responsible for the boat's safe navigation and must take all reasonable care. No minor may control the boat without the direct supervision of an adult. In the event of damage to the boat rendering it inoperable, however caused, no responsibility can be accepted by NBD for loss of time or cost of alternative accommodation or any other damages or occasioned expenses. In the case of any accident or damage to the boat or any other craft or to waterway property you must, for insurance reasons:

- record the name of any other boat involved with names, addresses and phone numbers of its owner and hirer (where applicable); and
- immediately report these facts to the boatyard with full details and extent of the damage; and
- report the full details in writing to NBD on return from holiday quoting your booking reference number. No repairs may be put in hand without NBD's consent. On returning the boat at the end of your holiday you must inform NBD of any damage or items broken, lost or stolen.

## 16. Damage Waivers and Security Deposits

Although boats are insured by NBD you are primarily responsible for any damage to the boat, its equipment or to any third party property and for loss of equipment. NBD will require either a (i) Damage waiver payment with separate fuel deposit. The damage waiver is non-refundable. You are indemnified for any damage to the boat, its equipment or to any third party property and for loss of equipment; or (ii) Security deposit with separate fuel deposit. Fuel costs exceeding the fuel deposit will be charged to you. For information including the normal charges see individual boats. Additional deposits. NBD reserves the right to charge a security deposit on certain parties - you will be advised when you book. If you return the boat without damage, loss of equipment or third-party claim against you, the deposit will be repaid. Where damage has occurred, all or part of your security deposit may be withheld by NBD. Notwithstanding the above if you or any member of your party either fail to comply with booking conditions or cause negligent, wilful or criminal damage you will be fully liable for any loss incurred.

## 17. Delays

Every boat is checked before the start of each hire and in the event of a mechanical failure the right is reserved to delay departure until a repair has been effected, so it is unlikely that your boat will suffer a mechanical breakdown. If a breakdown of any kind occurs, you must report it to NBD immediately so that repairs can be made to enable you to resume your cruise. Provided that NBD is so informed, they will take steps to repair the boat and/or its equipment as speedily as practicable in the circumstances. Apart from these obligations, NBD shall not be liable in any respect for any indirect or consequential loss or damage, whether financial or otherwise, suffered as a result of such a breakdown. NBD shall not be responsible for the consequences of delays or restrictions on cruising arising from obstruction, repairs or damage to waterways, flooding, shortage of water, industrial action or other circumstances beyond their control. The right is reserved to restrict cruising if unusual or hazardous conditions prevail.

## 18. Loss of Water

You are responsible for any charges made by waterways authorities in respect of loss of water or damage to waterway property caused by you while in charge of the boat.

## 19. Navigation Restrictions and Bye-Laws

On no account may you:

- tow, or be towed by other cruisers unless with professional assistance;
  - cruise after dark (your boat is not equipped or insured for night navigation);
  - permit your boat to be taken out to sea; or
- You must navigate in accordance with current bye-laws and must observe the speed limits applicable to the waterway. No hire boats may be taken below Haven Bridge, Great Yarmouth or through the lock at Oulton Broad. More detailed information will be provided at the boat yard.

## 20. Hirers' Equipment

You may not take on the boat, without NBD's prior permission, portable heaters of any type, lighting equipment or anything which may cause danger to the boat, its equipment or its occupants.

## 21. Injury or Damage to you or your property

NBD is not liable for death, personal injury, or loss or damage to you or your property, or any property belonging to or in the possession of the hirer or any member of the hirer's party (including any motor cars or their contents parked at the boat yard) unless it is caused by NBD's negligence or wilful default.

## 22. Party Members with limited mobility.

If you have any members of your party with limited mobility, you must enquire as to the suitability of the boat at the time of booking. Whilst no guarantee can be given, NBD will offer assistance and advice so far as is practical.

## 23. Extra Persons

The number of persons indicated for each boat must not be exceeded except where provision for extra persons is specified in individual boat particulars.

## 24. Optional Extras

Optional extras such as dinghies, etc. may be available at extra charge as stated in the brochure, but are subject to availability on your hire start date.

## 25. Pets

Up to two pets are normally allowed aboard a boat unless otherwise stated in the boat details, at an extra charge. Please advise on booking.

## 26. Modifications and Descriptions

Every effort has been made to ensure that individual boat descriptions contained in the brochure are correct. However, the right is reserved to make modifications to boat specifications that are considered necessary in the light of operating requirements. Layout plans in the brochure are for general guidance and are not to scale. Illustrations and photographs of standard production - built boats are sometimes used and the interior and exterior colour scheme and layout of your boat may therefore not be identical with the one in the brochure.

## 27. Disputes

Any dispute, difference or question which may at any time arise out of the contract or the subject-matter thereof shall be referred to a single arbitrator to be agreed upon between the parties (or failing agreement to be nominated by the Chartered Institute of Arbitrators on the application of either party) in accordance with the provisions of the Arbitration Act, 1950, or any statutory modifications or re-enactment thereof for the time being in force. These conditions supersede all previous issues.





## NORFOLK BROADS DIRECT

The Bridge Wroxham Norfolk NR12 8RX

For bookings please call

**01603 782207**

or book online

**www.broads.co.uk**

The Broads National Park, Britain's magical waterland

***Broads Tours***

Faircraft Loynes

Broads Tours and Faircraft Loynes are part of the Norfolk Broads Direct family



WORLD  
LAND  
TRUST™  
www.carbonbalancedpaper.com  
© 2008 WORLD LAND TRUST

By using Carbon Balanced Paper through the World Land Trust on this publication we have offset 3674kg of Carbon & preserved 308sqm of critically threatened tropical forests.

Think recycle! - When you have finished with this brochure please pass to a friend or family member