



# NORFOLK BROADS DIRECT

*Setting the Hire Standard*

**Rated  
Excellent**



**All Inclusive  
Boating Holidays**



**Wroxham Cottage  
Holidays**



**Luxury Holiday  
Homes**

## HOLIDAYS IN THE BROADS NATIONAL PARK

# WELCOME

If you are looking for an enchanting mix of relaxation and discovery then look no further than a Norfolk Broads Direct holiday.

We are here to offer friendly advice to make your holiday an experience to remember. Whether you are considering a boating holiday for the first time or need advice on choosing the perfect cottage, simply give us a call on **01603 516195** and we'll be happy to help.

We look forward to welcoming you to the Broads very soon!

With kindest regards

**The team at Norfolk Broads Direct.**



# CONTENTS

Welcome.....	2
About Us .....	4
All Inclusive Boating Holidays.....	5
Special Offers.....	5
About the Broads.....	6
Things to do .....	8
Nature and Wildlife .....	9
Boating Holidays.....	10
What's On Board .....	11
Our Fleet Quick Find .....	12
First Time Boating .....	14
Our Fleet 2+ Berth Cruisers.....	15
Our Fleet 4+ Berth Cruisers.....	18
Our Fleet 6+ Berth Cruisers.....	22
Luxury Properties.....	24
Wroxham Cottage Holidays.....	26

## FIRST TIME BOATING?

Boating is fun and easy - and we think it's the best way to explore the Broads.

If you've never been boating before, you may be wondering how to drive a boat? If so then scan our QR code below to see our video guides to Boating on the Broads.

We give you free full tuition when you take over your cruiser - watching our guide videos will help you to make the most of your holiday.





# ABOUT US



John Loynes founded Loynes boatyard in 1878

**Our main aim is - and always has been - to provide you with a special, enjoyable holiday to be remembered and treasured.**

**John Loynes - the founder of all Broads**

**Holidays, and Charles Hannaford - the founder of the Broads Tours passenger boat business, shared the same ambition - to provide top quality boats and service, to give you the best possible experience of a holiday on the Broads.**

When Len Funnell moved to Norfolk in 1979, he purchased a small boatyard called Faircraft - and it wasn't long before he expanded the business so that he was able to purchase the John Loynes operation as well as Broads Tours. Len wanted to pay tribute to both John Loynes and Charles

Hannaford - and this is why Faircraft Loynes and Broads Tours both operate under the umbrella of Norfolk Broads Direct.

The fleet today is very different from those in John Loynes' time, but our commitment to providing the highest standards of boats and customer care are the same as ever. At Norfolk Broads Direct and Faircraft Loynes we continue to operate a policy of constantly updating our boats, ensuring that our modern fleet of hire cruisers remains one of the best on the Broads.



Charles Hannaford founded Broads Tours in 1935



Len Funnell

## SAVE £££

### 4 NIGHTS FOR THE PRICE OF 3

Book a 4 night mid-week boating break for the same price as a 3 night weekend break. Mid week breaks can start on either Mondays or Tuesdays.

### 14 NIGHT DEAL

Save 10% on the lowest-priced week when you book a 2 week Boating holiday with Norfolk Broads Direct.

### RETURNING VISITOR LOYALTY SCHEME

Every time you holiday with us you'll receive a Unique Voucher Code, entitling you to a 5% discount off the hire terms of your next holiday.

*Please note only one voucher code to be used per holiday, voucher valid for 2 seasons after the season of issue, additional terms & conditions apply.*

## SPECIAL OFFERS

### FREE MORNING DAY BOAT HIRE

Enjoy a FREE morning half-day aboard a Standard Day Boat when staying in one of our properties at Wroxham during the off-peak season.

Subject to availability. Off-peak season is any time outside the school holidays. Booking in advance is recommended to avoid disappointment.

## ALL INCLUSIVE

At Norfolk Broads Direct we've priced our boating holidays so that there are no hidden extras. All of our prices are available online. Our boating holidays are all inclusive of:



✓ A tank of fuel



✓ 4G WiFi\*\*



✓ Parking



✓ Damage Waiver\*

### Optional Extras

Pet Charge   Rowing / Sailing Dinghy   Inside Car Parking   Additional Car Parking

\* We may charge an additional security deposit for certain parties.

\*\* Subject to signal strength



# ABOUT THE BROADS

A Broads holiday is about relaxing, having fun and exploring this wonderful part of the world at your own pace.

The Broads are man made waterways that resulted from peat digging dating back to the 12th century.

These diggings flooded and created the lakes that, today, we call Broads.

This unique environment has created a combination of wildlife, nature, culture, history, and tourism.

The next few pages will give you a taster of just how much there is to see, do and discover in the Broads National Park.



## Wroxham & Hoveton

The capital of the Broads, and the home of Norfolk Broads Direct. There are numerous pubs, restaurants, shops and attractions to explore.



110 MILES OF LOCKS



## Horning

Picturesque village with many pubs and restaurants.

## Ranworth

This delightful Broadland village is a must visit for wildlife lovers - as it is home to a popular nature reserve. We'd recommend a visit to the stunning "Cathedral of the Broads" St Helen's Church at Ranworth.

## Oulton Broad

A thriving centre of night-life and daytime activity. Look out for the powerboat racing - a delight to watch!

## Norwich

"The City" is home to a castle and two cathedrals, award-winning shopping centres and many bars and restaurants - well worth a visit on a longer holiday.



## Find out more

There's so much to explore - these few pages just aren't enough; scan here to build your perfect itinerary online.



**FREE NAVIGATION**



# THINGS TO DO

Amazona Zoo



**The Broads is such a fantastic holiday destination because there is such a wide variety of things to do. From thrill seekers' attractions to tranquil nature trails, there's truly something to entertain everyone.**

Love adventure? Try boating, river trips, paddleboarding, canoeing, and attractions.

Prefer a more relaxing pace? There's nature walks, tours of historic castles and cathedrals, and a superb range of shops.

And whatever you choose to do, we're sure you'll build up an appetite and there are plenty of great eateries serving local produce.



*Boating*



*Great Local Food*



*Walks & Nature Trails*



BeWILDerwood

*Family Fun Attractions*



*History & Heritage*



*Superb Shopping*





**The Broads is renowned for its diverse range of flora and fauna. In fact, more than a quarter of the UK's rarest wildlife can be found in the Broads.**

Taking a boat out on the Broads is one of the best ways to see some of these unique mammals, birds, plants and invertebrates.

There are several nature reserves, and the whole area is considered a member of the National Parks Family.

Here are just a few of the most iconic species you're in with a chance of seeing on a Broads holiday:



*Swallowtail Butterfly*



*Otter*



*Barn Owl*



*Heron*



*Lily*



*Bullrushes*

# BOATING HOLIDAYS

## How to choose your boat

### STEP 1

#### CHOOSE THE STYLE OF BOAT

We care about your comfort. If you or anybody in your party has limited mobility, or other special needs, please telephone our booking office on 01603 516195, so that we can help you find the boat or cottage to suit you.

### STEP 2

#### SIZE MATTERS

Choose your cruiser to accommodate your whole party comfortably. The interior layout plan is a guide and is not to scale.

### STEP 3

#### CHOOSE HOLIDAY DURATION

Choose a week, 3 night weekend, or 4 night midweek short break.

### STEP 4

#### CHECK AVAILABILITY & BOOK

Book online at [broads.co.uk](http://broads.co.uk). The website has even more photos and a virtual tour of every boat.

## Styles of Cruiser



### Forward Steering

The boats have the steering position at the front. Usually on one level with a door at each end. Low enough to pass through most bridges. Some have a split sliding roof opening over the seating area.



### Centre Steering

Featuring a sliding canopy which can be lowered. When the canopy is lowered you have the benefit of being outside whilst enjoying the comforts inside your cruiser. These boats pass under most bridges.



### Sedan Cruiser

These boats feature a raised steering position with good visibility, well suited for early and late season cruising. They have sliding patio doors to a large aft well. Ours even have a whirlpool bath! May not pass under all bridges.



### Dual Steering

Featuring an inside forward steering position & an outside steering position on the upper deck with amazing views. There is usually a steep set of steps between the two decks. May not pass under all bridges.



All our holiday cruisers are fully equipped to ensure you have a safe, comfortable and carefree holiday, with each boat featuring:

- ✓ Unlimited 4G Streaming WiFi - subject to signal strength
- ✓ 240V Mains power via inverter (with wattage restrictions) or shore power
- ✓ Fully equipped galley includes cutlery, crockery and utensils, gas cooker / hob, microwave and fridge
- ✓ Hot and cold water, with temperature controlled showers
- ✓ Welcome pack
- ✓ Bed linen (duvets, sheets and pillows)
- ✓ Towels (two per crew member)
- ✓ Handmade Norfolk soap
- ✓ Warm air heating
- ✓ Flat screen television
- ✓ Shaver point, hair dryer (low wattage 240v)
- ✓ Buoyancy aids
- ✓ Mud weight

In addition to the standard equipment, there are many other options and facilities on board. Please see the individual cruiser listing for further details.

## Key to symbols

### Bow Thruster

The cruiser is fitted with bow thrusters, that move the bow only, making manoeuvring and mooring easier.



### Games Console

PlayStation 4 games console is included on board. (Games are not included)



### Electric Mud Weight

The cruiser is fitted with an electrically operated mud weight. Lower and raise the mud weight using buttons on the deck.



### Berths

Shows the number of berths available on the cruiser. Plus 2 indicates a convertible berth is located in the saloon.





# OUR FLEET - QUICK FIND



Sleeps  
2

FAIR PRINCE PREMIER CRUISER

P15



Sleeps  
2

FAIR CONSORT PREMIER CRUISER

P15



Sleeps  
2

FAIR JUBILEE PREMIER CRUISER

P15



Sleeps  
2

FAIR PRINCESS

P16



Sleeps  
2+2

FAIR EXPLORER PREMIER CRUISER

P17



Sleeps  
2+2

FAIR AMBASSADOR

P17



Sleeps  
4

FAIR CHANCELLOR PREMIER CRUISER

P18



Sleeps  
4

FAIR COURIER PREMIER CRUISER

P18



Sleeps  
4+2

FAIR CRUSADER PREMIER CRUISER

P19



Sleeps  
4+2

FAIR COUNTESS

P20



Sleeps  
4+2

FAIR DUKE

P20



Sleeps  
4+2

FAIR COMMODORE

P20



Sleeps  
4+2

FAIR SOVEREIGN

P21



Sleeps  
6

FAIR MAJESTY

P22



Sleeps  
6+2

FAIR ADMIRAL

P22



For a virtual tour of our boats  
visit [www.broads.co.uk](http://www.broads.co.uk)



Sleeps  
2

FAIR ARISTOCRAT PREMIER CRUISER

P16



Sleeps  
2

FAIR MARQUESS PREMIER CRUISER

P16



Sleeps  
2

FAIR EXECUTIVE PREMIER CRUISER

P16



Sleeps  
2+2

FAIR VISCOUNT

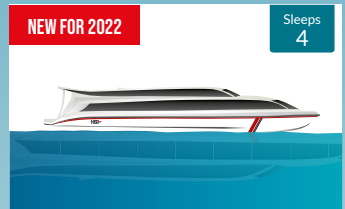
P17



Sleeps  
2+1

FAIR REGENT

P17



NEW FOR 2022

Sleeps  
4

FAIR REGAL PREMIER CRUISER

P18



Sleeps  
4+2

FAIR COMMISSIONER PREMIER CRUISER

P19



Sleeps  
4+2

FAIR ENTREPRENEUR PREMIER CRUISER

P19



Sleeps  
4+2

FAIR DUCHESS

P19



Sleeps  
4+2

FAIR MONARCH

P20



Sleeps  
4+2

FAIR PRESIDENT

P21



Sleeps  
4+2

FAIR ROYALE

P21



Sleeps  
6+2

FAIR STATESMAN

P23



Sleeps  
7+2

FAIR EMPRESS

P23



Sleeps  
8

FAIR EMPEROR

P23

# FIRST TIME BOATING?

Whether you're a first-time boater or an old deckhand - we want you to get the most from your boating holiday. Before you arrive, we'll send you links to our online video guides to help familiarise you with operating and handling your cruiser. On arrival, our experienced team will give you comprehensive tuition. Your skipper's map

will aid you in navigation and contains many guides for mooring, handling and operating your cruiser. Our souvenir guidebook will help you plan your routes, and our welcome pack includes a few goodies to help you settle in. Our team will be on call to support you throughout your holiday.



*Trial Run Tuition*



*Skipper's Map*



*Video Guides*



*Souvenir Guidebook*



*Welcome Pack*



*On Call Engineers*

## Top Tip

The Broads has many bridges you'll navigate during your holiday. The Broads are tidal, and the water levels rise and fall throughout the year - this means not all of the bridges are always navigable by all craft. If a cruiser will not go under all bridges you'll see "Bridges: restrictions apply" under the listing. This means it won't go under every bridge.



# OUR FLEET 2+ BERTH CRUISERS

## An introduction to our 2 berth cruisers

You'll see the essential information in the following pages; for further details and virtual tours please visit our website.

### FAIR PRINCE ★★★★★ PREMIER CRUISER

STARTS FRI, SAT, MON & TUE



Sleeps  
2



L: 35ft (10.67m) B: 12ft (3.66m) H: 7ft 0in (2.13m)

**Spacious cruiser perfect for a couple.**  
Enclosed full height shower with electric flush toilet, additional TV in aft cabin.  
Easy Stern access. Electrically operated sliding canopy.

**Bridges: restrictions apply**

**All Inclusive Prices From  
Short break £772 - 7 Nights £1103**

### FAIR CONSORT ★★★★★ PREMIER CRUISER

STARTS FRI, SAT, MON & TUE



Sleeps  
2



L: 35ft (10.67m) B: 12ft (3.66m) H: 7ft (2.13m)

**A superior cruiser for a luxury getaway.**  
Raised central steering position, electric sliding canopy over saloon, easy stern access, additional TV in aft cabin, full-height shower with electric flush toilet.

**Bridges: restrictions apply**

**All Inclusive Prices From  
Short break £814 - 7 Nights £1150**

### FAIR JUBILEE ★★★★★ PREMIER CRUISER

STARTS FRI, SAT, MON & TUE



Sleeps  
2



L: 36ft (10.97m) B: 12ft (3.66m) H: 8ft 10in (2.69m)

**Luxurious and spacious cruiser.** Raised central steering position, easy stern access, whirlpool bath, domestic flush toilet, patio doors to outside seating area, walk-round double berth, solar panels.

**Bridges: restrictions apply**

**All Inclusive Prices From  
Short break £814 - 7 Nights £1145**



All of our cruisers  
are pet friendly



All of our cruisers hook  
up to shore power

## FAIR ARISTOCRAT ★★★★★ PREMIER CRUISER

STARTS FRI & MON



Sleeps  
2



**Spacious interior with open plan saloon and galley.** Dual steering with spacious upper deck with seating and a table, electric hob and oven, full height shower & electric flush toilet, reversing camera.



L: 36ft (10.97m) B: 12ft (3.66m) H: 8ft 5in (2.60m)

**Bridges: restrictions apply**

**All Inclusive Prices From  
Short break £893 - 7 Nights £1276**

## FAIR MARQUESS ★★★★★ PREMIER CRUISER

STARTS FRI, SAT, MON & TUE



Sleeps  
2



**Spacious cruiser with large windows.** Dual steering, alfresco dining & lounging area, large cabin with walk around double bed, full height shower unit & domestic flush toilet, reversing camera.



L: 36ft (10.97m) B: 12ft (3.66m) H: 8ft 4in (2.54m)

**Bridges: restrictions apply**

**All Inclusive Prices From  
Short break £893 - 7 Nights £1276**

## FAIR EXECUTIVE ★★★★★ PREMIER CRUISER

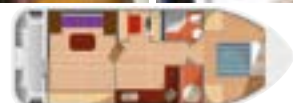
STARTS FRI, SAT, MON & TUE



Sleeps  
2



**A luxurious & spacious sedan style cruiser.** Raised central steering position, sunroof over saloon, patio doors to outside seating area, whirlpool bath, domestic flush toilet, full height shower room.



L: 36ft (10.97m) B: 12ft (3.66m) H: 8ft 10' (2.69m)

**Bridges: restrictions apply**

**All Inclusive Prices From  
Short break £830 - 7 Nights £1176**

## FAIR PRINCESS ★★★★★

STARTS FRI & MON



Sleeps  
2



**Stylish, easy to operate cruiser** Forward driving position, split sliding canopy, single-level throughout, easy stern access, walk around double berth, shower with electric flush toilet.



L: 31ft (9.45m) B: 12ft (3.66m) H: 6ft 8in (2.03m)

**All Inclusive Prices From  
Short break £656 - 7 Nights £908**



All of our cruisers have  
Unlimited 4G Free Wi-Fi



For a virtual tour of our boats  
visit [www.broads.co.uk](http://www.broads.co.uk)

## FAIR EXPLORER

★★★★★ PREMIER CRUISER  
STARTS FRI & MON



Sleeps  
2+2



**New for 2021. Spacious dual steering cruiser.** Alfresco dining & lounge area, walk round double bed, luxury bathroom with full height shower & domestic flush toilet, reversing camera.



L: 36ft (10.97m) B: 12ft (3.66m) H: 8ft 4in (2.54m)

**Bridges:** restrictions apply

All Inclusive Prices From  
Short break £893 - 7 Nights £1276

## FAIR AMBASSADOR

★★★★ STARTS FRI & MON

Sleeps  
2+2



**Traditional cruiser for discovering the Broads.** Raised central steering position, sliding canopy over saloon seating area, rear walk around double berth, spacious toilet and shower.



L: 31ft (9.45m) B: 11ft (3.35m) H: 6ft 9in (2.11m)

All Inclusive Prices From  
Short break £562 - 7 Nights £803

## FAIR VISCOUNT

★★★★ STARTS FRI, SAT, MON & TUE

Sleeps  
2+2



**Comfortable forward steering cruiser.** Split sliding canopy, single level throughout, easy stern access, shower and electric flush toilet, additional convertible double in saloon.



L: 31ft (9.45m) B: 12ft (3.66m) H: 6ft 8in (2.03m)

All Inclusive Prices From  
Short break £562 - 7 Nights £803

## FAIR REGENT

★★★★ STARTS FRI, SAT, MON & TUE

Sleeps  
2+1



**Traditional forward steering cruiser ideal for a small family.** Split sliding canopy over saloon, single level throughout, large bathroom, shower over corner bath, domestic flush toilet.



L: 35ft (10.66m) B: 12ft (3.66m) H: 6ft 10in (2.08m)

All Inclusive Prices From  
Short break £630 7 Nights £887



# OUR FLEET 4+ BERTH CRUISERS

## An introduction to our 4 berth cruisers

You'll see the essential information in the following pages; for further details and virtual tours please visit our website.

### FAIR REGAL ★★★★★ PREMIER CRUISER

STARTS SAT & TUE



Sleeps  
4



**NEW FOR 2022**



Coming Soon  
more pictures on  
[www.broads.co.uk](http://www.broads.co.uk)



L: 46ft (14.02m) B: 12ft (3.66m) H: TBC

**Brand new for 2022, perfect for two couples.** Featuring two en-suite cabins with king size beds this dual steering cruiser has amazing views from the upper deck. \*Details subject to change

**Bridges: restrictions apply**

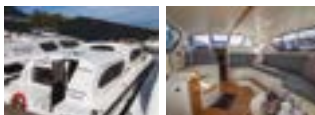
**All Inclusive Prices From  
Short break £1265 - 7 Nights £1806**

### FAIR CHANCELLOR ★★★★★ PREMIER CRUISER

STARTS FRI, SAT, MON & TUE



Sleeps  
4



L: 44ft (13.41m) B: 12 ft (3.66m) H: 7ft 0in (2.13m)

**Stylish cruiser with two en-suite cabins.** Raised central steering position, electrically operated sliding canopy over saloon, easy stern access, 2 enclosed showers, 1 full height, electric flush toilets.

**Bridges: restrictions apply**

**All Inclusive Prices From  
Short break £1118 - 7 Nights £1565**

### FAIR COURIER ★★★★★ PREMIER CRUISER

STARTS FRI & MON



Sleeps  
4



L: 36ft (10.97m) B: 12 ft (3.66m) H: 8ft 5in (2.60m)

**Luxurious cruiser with outside dining area.** Dual steering, 2 showers with toilets, 1 en-suite, reversing camera, USB charging points, walk round double bed, large upper deck with seating

**Bridges: restrictions apply**

**All Inclusive Prices From  
Short break £1045 - 7 Nights £1475**



All of our cruisers have  
Unlimited 4G Free WiFi



For a virtual tour of our boats  
visit [www.broads.co.uk](http://www.broads.co.uk)

## FAIR CRUSADER ★★★★★ PREMIER CRUISER

STARTS SAT & TUE



Sleeps  
4+2



L: 36ft (10.97m) B: 12ft (3.66m) H: 8ft 5in (2.60m)

**Modern and luxurious cruiser with large sun-deck.** Dual steering, 2 showers with toilets, 1 en-suite, reversing camera, USB charging points, walk round double bed.

**Bridges:** restrictions apply

**All Inclusive Prices From**  
**Short break £1045 - 7 Nights £1475**

## FAIR COMMISSIONER ★★★★★ PREMIER CRUISER

STARTS FRI, SAT, MON & TUE



Sleeps  
4+2



L: 44ft (13.41m) B: 12ft (3.66m) H: 7ft 10in (2.39m)

**Spacious cruiser perfect for two couples.** Dual steering, excellent outside dining area and sun lounger, sunroof over the saloon, easy stern access, spacious saloon and galley, 2 en-suites, full height showers.

**Bridges:** restrictions apply

**All Inclusive Prices From**  
**Short break £1197 - 7 Nights £1691**

## FAIR ENTREPRENEUR ★★★★★ PREMIER CRUISER

STARTS FRI, SAT, MON & TUE



Sleeps  
4+2



L: 46ft (14.02m) B: 12ft (3.66m) H: 8ft 2in (2.49m)

**Luxury cruiser perfect for a family** Dual steering with excellent outside steering position, alfresco dining area, 2 shower rooms with enclosed full height showers, 1 ensuite. Electric flush toilets

**Bridges:** restrictions apply

**All Inclusive Prices From**  
**Short break £1234 - 7 Nights £1727**

## FAIR DUCHESS ★★★★★

STARTS FRI, SAT, MON & TUE

Sleeps  
4+2



L: 35ft (10.67m) B: 12ft (3.66m) H: 6ft 10in (2.08m)

**A family boat all on one level** Forward steering position, split sliding canopy, single level throughout, easy stern access, 2 shower rooms, 1 en-suite with electric flush toilets.

**All Inclusive Prices From**  
**Short break £714 - 7 Nights £998**



All of our cruisers  
are pet friendly

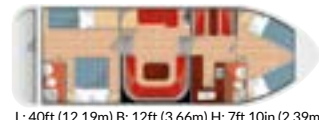


All of our cruisers hook  
up to shore power

## FAIR COUNTESS ★★★★★

STARTS FRI, SAT, MON & TUE

Sleeps  
4+2



L: 40ft (12.19m) B: 12ft (3.66m) H: 7ft 10in (2.39m)

**Family cruiser with easy stern access.** Raised Central steering position, electric operated sliding canopy, spacious saloon with convertible double berth, 2 shower rooms, 1 en-suite, electric flush toilets.

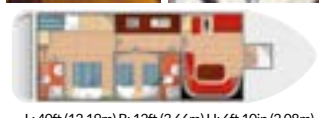
**Bridges:** restrictions apply

**All Inclusive Prices From  
Short break £798 7 Nights £1113**

## FAIR DUKE ★★★★★

STARTS SAT & TUE

Sleeps  
4+2



L: 40ft (12.19m) B: 12ft (3.66m) H: 6ft 10in (2.08m)

**Single level family boat with easy rear access.** Forward steering position, split sliding canopy, single level throughout, 2 shower rooms, 1 en-suite with electric flush toilets

**All Inclusive Prices From  
Short break £740 - 7 Nights £1045**

## FAIR COMMODORE ★★★★★

STARTS FRI, SAT, MON & TUE



Sleeps  
4+2



L: 35ft (10.67m) B: 12ft (3.66m) H: 7ft 11in (2.41m)

**Spacious dual steering cruiser perfect for two couples.** Excellent outside steering position, sun-deck with cushioned seating, 2 shower rooms, electric flush toilets, 1 en-suite with full-size enclosed shower.

**Bridges:** restrictions apply

**All Inclusive Prices From  
Short break £830 - 7 Nights £1187**

## FAIR MONARCH ★★★★★

STARTS FRI, SAT, MON & TUE



Sleeps  
4+2



L: 40ft (12.19m) B: 12ft (3.66m) H: 7ft 10in (2.39m)

**Stylish dual steering cruiser with outside seating and dining area.** Excellent outside steering position, sunroof over saloon, large rear cabin with walk around double berth, 2 en-suites, whirlpool bath.

**Bridges:** restrictions apply

**All Inclusive Prices From  
Short break £998 - 7 Nights £1391**





All of our cruisers have  
Unlimited 4G Free WiFi



For a virtual tour of our boats  
visit [www.broads.co.uk](http://www.broads.co.uk)

## FAIR PRESIDENT



STARTS FRI, SAT, MON & TUE



Sleeps  
4+2



L: 46ft (14.02m) B: 12ft (3.66m) H: 8ft 2in (2.49m)

**Dual steering cruiser for spacious living.**

Excellent outside steering position, alfresco dining area, 1 en-suite with whirlpool bath & shower over bath, full height shower room, 2 domestic flush toilets, 1 electric flush toilet.

**Bridges:** restrictions apply

All Inclusive Prices From  
Short break £1181 - 7 Nights £1659

## FAIR ROYALE



STARTS FRI, SAT, MON & TUE



Sleeps  
4+2



L: 35ft (10.67m) B: 12ft (3.66m) H: 7ft 10in (2.39m)

**High specification modern cruiser.** Dual steering with excellent outside steering position, easy stern access, additional TV, sun-deck, 2 shower rooms, electric flush toilets, 1 en-suite with full height shower

**Bridges:** restrictions apply

All Inclusive Prices From  
Short break £893 - 7 Nights £1276

## FAIR SOVEREIGN



STARTS FRI, SAT, MON & TUE



Sleeps  
4+2



L: 40ft (12.19m) B: 12ft (3.66m) H: 8ft 2in (2.49m)

**Luxurious cruiser with outside dining area.** Dual steering, upper deck with cushioned seating and dining table, large rear cabin with walk around double berth, 2 en-suite cabins 1 with whirlpool corner bath, 1 with shower.

**Bridges:** restrictions apply

All Inclusive Prices From  
Short break £1045 - 7 Nights £1475

### Top Tip

**Berths** - All of our cruisers state the number of people they sleep. When a plus symbol with a number is shown this means the cruiser has a convertible berth in the saloon. Some cabins may be able to have double or twin berth configurations, please check the website for all configurations.



# OUR FLEET 6+ BERTH CRUISERS

## An introduction to our 6 berth cruisers

You'll see the essential information in the following pages; for further details and virtual tours please visit our website.



### FAIR MAJESTY ★★★★★

STARTS FRI, SAT, MON & TUE



Sleeps  
**6**



**Ideal for a family or group of friends**  
Raised central steering position, easy stern access, bow thruster for ease of mooring, 2 en-suite shower rooms and electric flush toilets.

**Bridges:** restrictions apply

**All Inclusive Prices From**  
Short break £1076 - 7 Nights £1528



L: 44ft (13.41m) B: 12ft (3.66m) H: 7ft 0in (2.13m)

### FAIR ADMIRAL ★★★★★

STARTS FRI, SAT, MON & TUE



Sleeps  
**6+2**



**Well-equipped stylish cruiser.**  
Dual steering, upper deck with cushioned seating & dining table, sunroof over saloon, PS4 (games not included), 2 showers, 1 full height shower, electric flush toilet, additional WC.

**Bridges:** restrictions apply

**All Inclusive Prices From**  
Short break £1045 - 7 Nights £1481



L: 40ft (12.19m) B: 12ft (3.66m) H: 8ft 2in (2.49m)

## Top Tip

### Your Safety

Safety is absolutely paramount on and around the water. We have produced a series of video guides for you to watch prior to your holiday. You will receive a link to the video guides with your confirmation email.



All of our cruisers have  
Unlimited 4G Free WiFi



For a virtual tour of our boats  
visit [www.broads.co.uk](http://www.broads.co.uk)

## FAIR STATESMAN ★★★★★

STARTS FRI, SAT, MON & TUE



Sleeps  
**6+2**



**Stylish dual steering cruiser with large outside seating and dining area.** Easy Stern access. FreeSat TV channels, PS4, spacious galley and saloon, 3 shower rooms, electric flush toilets, 1 en-suite



L: 44ft (13.41m) B: 12ft (3.66m) H: 7ft 10in (2.39m)

**Bridges: restrictions apply**

**All Inclusive Prices From  
Short break £1265 - 7 Nights £1806**

## FAIR EMPRESS ★★★

STARTS FRI, SAT, MON & TUE

Sleeps  
**7+2**



**Traditional cruiser with adaptable living accommodation.** Raised central steering position, electrically operated sliding canopy over saloon, easy stern access, 3 shower rooms, electric flush toilets.



L: 44ft (13.41m) B: 12ft (3.66m) H: 6ft 10in (2.08m)

**Bridges: restrictions apply**

**All Inclusive Prices From  
Short break £1113 - 7 Nights £1575**

## FAIR EMPEROR ★★★★★

STARTS SAT & TUE



Sleeps  
**8**



**Dual steering with excellent outside seating area & dining table.** Sunroof over saloon, easy stern access, FreeView TV channels, PS4, spacious saloon, open plan galley, 3 showers, electric flush toilets



L: 44ft (13.41m) B: 12ft (3.66m) H: 7ft 10in (2.39m)

**Bridges: restrictions apply**

**All Inclusive Prices From  
Short break £1192 - 7 Nights £1691**

### Top Tip

#### Skipper's Map

When you arrive we'll give you a free map of the Broads. On the reverse side you'll find lots of useful information about how to handle, manoeuvre, operate and enjoy your cruiser. We've also included tide tables and journey times to help you plan your route.

# LUXURY PROPERTIES

Treat yourself to a luxury riverside holiday home located in the picturesque village of Horning. Where you can fish from the garden during open season.

## THE LITTLE HOUSE

Sleeps  
10



Steps away from the village, you can easily explore the local pubs and quaint shops.

**High spec finish. The Little House is far from 'little'.**

- Modern kitchen with induction hob and wine cooler.
- Breakfast area with huge window overlooking river.
- Utility room with washing machine & tumble dryer.
- Dining room with french doors to the patio.
- 2 twin rooms, one upstairs, one off dining room.
- Living room with sash windows overlooking patio.
- Downstairs cloakroom off entrance hall.
- Master suite with super king sized bed, views over the river, dressing room & en-suite bathroom.
- 2 double rooms with super king sized bed, one with en-suite shower.
- Family bathroom with steps up to inset bath with shower over.
- Raised patio area with steps leading down to a river fronted garden.
- 2 parking spaces, 2 additional spaces available a short walk away.

**Short breaks from £965, 7 Nights from £1195**

## TEALBY

Sleeps  
8



**Tealby boasts large windows allowing you to take in the spectacular views. Large decking perfect for entertaining or simply enjoying a quiet moment whilst the boats cruise past.**

- Entrance hall, cloakroom & WC.
- Open plan dining, kitchen & lounge area with TV & DVD player, doors open out on to riverside terrace.
- Kitchen with fridge/freezer, electric oven/hob, microwave & dishwasher.
- Utility room with washing machine & tumble dryer
- Double bedroom with super king sized bed & en-suite bathroom (shower over bath).
- Double bedroom with super king sized bed with patio doors on to private balcony, en-suite shower room, TV & DVD player.
- Two twin bedrooms.
- Family bathroom with shower, toilet and hand basin
- Large decked area with outdoor furniture overlooking the water with grassed lawn.
- There is space for parking four cars at the property.

**Short breaks from £855, 7 Nights from £1245**



## Horning - A Picturesque Broadland Village

Horning is a delightful village and a must visit on any trip to the Broads. Lining the northern bank of the River Bure the village is teeming with restaurants, pubs, tea-rooms and other attractions including a historic church to visit.

### WHITE GABLES



**White Gables** was extensively refurbished during 2020. Situated just off the main street in Horning, this luxurious detached riverside property is the perfect retreat for up to 10 people. 5-10 minute walk to the village shops.

- Entrance hall leading to second lounge with patio doors.
- 3 double bedrooms with super king sized bed, 2 with en-suite bathroom with bath, shower, toilet and hand basin. 1 with patio doors.
- 2 twin bedrooms, 1 with patio doors.
- Bathroom with shower, toilet and hand basin.
- Utility room with washer dryer.
- Open plan kitchen, dining area and lounge with patio doors on to a balcony overlooking the water.
- Toilet and hand basin.
- Raised patio area with garden furniture and steps leading down to a river fronted garden.
- There is space for parking three cars at the property.

Sleeps  
**10**

**Short breaks from £895, 7 Nights from £1295**

### REEDLINGS



**Based all on one level facing the River Bure** you'll enjoy throwing open the tri fold doors which lead to the large balcony overlooking the river.

- Modern open plan lounge, dining area and fully equipped modern kitchen with dishwasher.
- Tri-fold doors to balcony overlooking the River.
- Spacious master bedroom with super king sized bed, small private balcony, wall mounted TV, access to shared bathroom with shower over the bath, toilet and hand basin.
- Double room with king size bed.
- Single room with access to shared bathroom with shower over the bath, toilet & hand basin.
- Twin room with en-suite bathroom with a shower, toilet and hand basin. Access on to main balcony.
- Bathroom with shower, toilet and hand basin.
- Large balcony with outdoor furniture.
- Under property seating area overlooking the water.
- Parking for up to 4 cars.
- Pet friendly, maximum of 2 dogs.

Sleeps  
**7**

**Short breaks from £605, 7 Nights from £865**

# WROXHAM COTTAGE HOLIDAYS

1

2

3

4

5

7 (top floor)  
6 (ground floor)



## CORDON ROUGE COTTAGES & APARTMENTS

Sleeps 4

- ✓ Open plan sitting / dining room
- ✓ Modern fitted kitchen with microwave
- ✓ Bed linen and towels provided
- ✓ Parking for one car only
- ✓ One twin-bedded room
- ✓ One double bedroom
- ✓ Travel cot and high-chair available on request.

## COTTAGES 1-5

- ✓ One pet is welcome in the cottages
- ✓ Dishwasher
- ✓ Outside decking with garden furniture
- ✓ Bathroom with bath (shower over)



## APARTMENT 6

- ✓ Situated on the ground floor
- ✓ French doors lead on to a decking area with garden furniture
- ✓ Bathroom with shower

## APARTMENT 7

- ✓ Situated on the first floor (access via external steps)
- ✓ Balcony overlooking the river
- ✓ Bathroom with shower

## APARTMENT 12

- ✓ Situated on the first floor (access via external steps)
- ✓ Picture windows overlooking the river and bridge
- ✓ Two en-suite bathrooms with shower

Short breaks from £455, 7 Nights from £655

Short breaks from £389, 7 Nights from £565



See inside our cottages online  
at [www.broads.co.uk](http://www.broads.co.uk)

8

9

10

11

12



## WHERRYMAN'S PENTHOUSES NO 8-11 REFURBISHED FOR 2022

**Sleeps 2**

- ✓ Situated on the first floor (access via external steps)
- ✓ Balcony overlooking Wroxham Bridge and River Bure
- ✓ Open plan sitting/dining area and kitchen with microwave
- ✓ Bed linen and towels provided
- ✓ King size double bedroom on the second floor (some restricted head room)
- ✓ Ensuite bathroom with bath and separate electric shower, toilet and hand basin
- ✓ Parking for one car



## FAIRVIEW LODGE

**Sleeps 8**

- ✓ Situated on the edge of our private marina
- ✓ Small enclosed garden & deck area
- ✓ Kitchen with dishwasher & microwave.
- ✓ First floor: 1 double en-suite bedroom, 1 twin bedroom, family bathroom.
- ✓ Second floor: 1 double en-suite bedroom, 1 twin bedroom.
- ✓ Bed linen & towels provided
- ✓ Parking for 2 cars.

Short breaks from £325, 7 Nights from £455

Short breaks from £635, 7 Nights from £895

Check availability, view prices and book online at [www.broads.co.uk](http://www.broads.co.uk)



# PLAN YOUR NEXT BROADS ADVENTURE

There's so much to do - just one visit might not be enough!



**Boating**



**Great Local Food**



**Wildlife & Nature**



**Family Fun Attractions**



**History & Heritage**



**Superb Shopping**



The Bridge Wroxham Norfolk NR12 8RX, 01603 516195

Book online at [www.broads.co.uk](http://www.broads.co.uk)